

The figure lettered A,B,C,D,E,F,G,H,I,J,K,L,M,N,O,P,A represents a mining permit area in extent approximately 2.8 hectare comprising of a portion of Portion 0 (Remaining Extent) of the farm Akermans Kraal 11 RD Registration division Aliwal Magisterial District Aliwal, Eastern Cape Province (Reference: EC 30/5/13/2/10 MP) (but subject to Regulation 17 of the mine Health and Safety Act, Excluding any area within 100 metres of any railway, cemetery, residential area, public area or within 100m of a public road), situated in the magisterial district of Aliwal, Eastern Cape Province for which Yellowwood Trust with Registration no IT000149/2017 has applied for a Mining Permit in terms of section 27 of the mineral and petroleum resources development act, 2002 (act 28 of 2002).

Applicant	GIS Technician	Regional Manager
Date:	Greenmined Date:	Eastern Cape Region Date:

- Legend**
- Barriers**
 - FENCE
 - Inland water**
 - DAM
 - River**
 - NON-PERENNIAL CENTER LINE
 - Orange River
 - FLOOD BANK
 - Roads**
 - TRACK FOOTPATHS
 - Topo**
 - ERODED AREA
 - Vegetation**
 - CULTIVATED LAND
 - Eastern Cape Province
 - Joe Gqabi - District Municipality
 - Walter Sisulu - Local Municipality
 - Wards no - 10
 - Mining Permit area**
 - Mining Application 2.8ha
 - Aliwal Administrative Region
 - Farm portions
 - Aliwal - Magisterial district
 - Parent farms

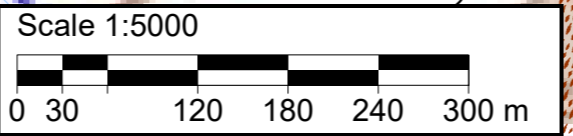
Proposed mining area coordinates:
A30.67169°S; 26.63423°E
B30.671544°S; 26.634593°E
C30.671856°S; 26.635192°E
D30.672211°S; 26.634977°E
E30.672355°S; 26.635237°E
F30.671967°S; 26.635443°E
G30.672064°S; 26.636172°E
H30.673813°S; 26.635994°E
J30.673755°S; 26.635085°E
K30.672482°S; 26.635319°E
L30.672243°S; 26.634966°E
M30.673615°S; 26.634126°E
N30.67356°S; 26.633741°E
P30.672547°S; 26.634385°E
A30.67169°S; 26.63423°E

A30°40'18.084"S; 26°38'3.228"E
B30°40'17.558"S; 26°38'4.535"E
C30°40'18.682"S; 26°38'6.691"E
D30°40'19.96"S; 26°38'5.917"E
E30°40'20.478"S; 26°38'6.853"E
F30°40'19.081"S; 26°38'7.595"E
G30°40'19.43"S; 26°38'10.219"E
H30°40'25.727"S; 26°38'9.578"E
J30°40'25.518"S; 26°38'6.306"E
K30°40'20.935"S; 26°38'7.148"E
L30°40'20.075"S; 26°38'5.878"E
N30°40'24.816"S; 26°38'1.468"E
M30°40'25.014"S; 26°38'2.854"E
P30°40'21.169"S; 26°38'3.786"E
A30°40'18.084"S; 26°38'3.228"E

Mining permit application area:
2.8 ha

Client:
Yellowwood Trust

Consultant:



T3026DA