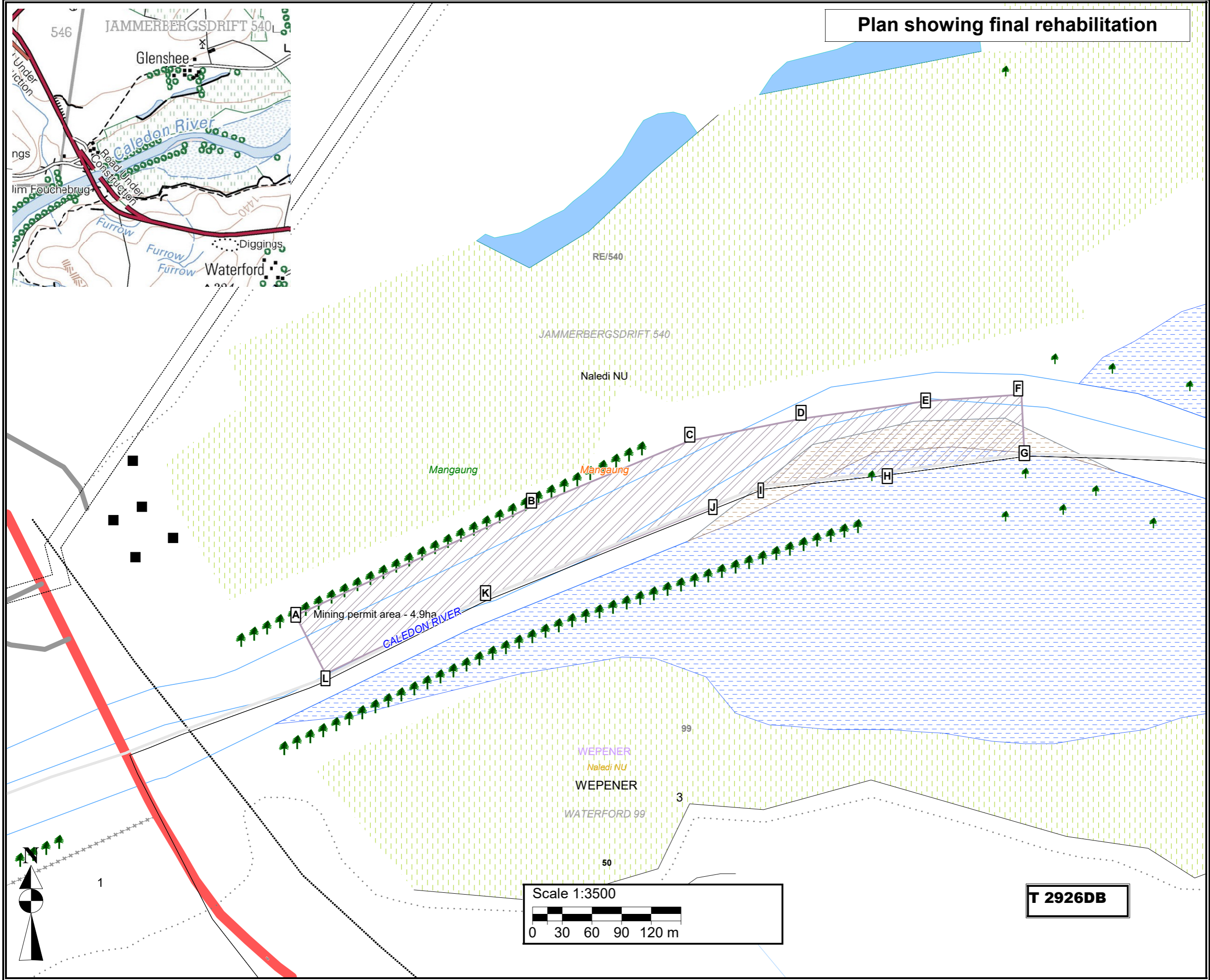


# Plan showing final rehabilitation



- Legend**
- Artificial surfaces
    - DIGGING
  - Barriers
    - ANTI EROSION WALL
    - FENCE
  - Buildings
    - HOUSE
    - LARGE BUILDING
  - Drainage
    - FURROW
  - Inland water
    - DAM
    - NON-PERENNIAL PAN
  - River
    - NON-PERENNIAL CENTER LINE
    - PERENNIAL CENTER LINE
    - NON-PERENNIAL EXTENT
    - FLOOD BANK
    - SAND BANK
  - Roads
    - R26
    - TRACK FOOTPATH
  - Vegetation
    - CULTIVATED LAND
    - PLANTATION
    - TREE
    - WOODLAND
  - Water source
    - RESERVOIR
    - WINDPUMP
  - Disturbed area rehabilitated and topsoil replaced
  - Administrative region: Wepener
  - Farm portions
  - Magisterial district: Wepener
  - Parent farms
  - Servitude areas
  - Free State Province
  - Local Municipality: Mangaung
  - Wards 2016 - 50

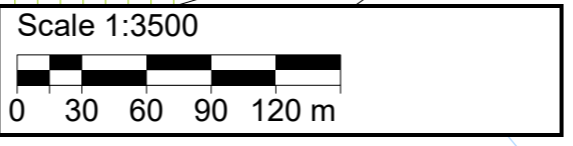
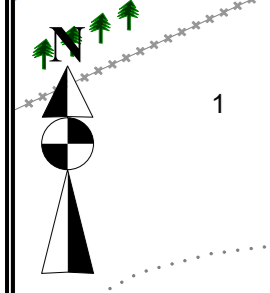
**Proposed mining area coordinates:**  
 A29.72346°S; 26.96407°E  
 B29.72247°S; 26.96653°E  
 C29.72187°S; 26.96818°E  
 D29.72167°S; 26.96934°E  
 E29.72151°S; 26.97064°E  
 F29.72145°S; 26.97164°E  
 G29.72199°S; 26.97167°E  
 H29.72215°S; 26.97024°E  
 I29.72228°S; 26.96892°E  
 J29.72248°S; 26.96839°E  
 K29.72331°S; 26.96601°E  
 L29.72399°S; 26.96438°E  
 A29.72346°S; 26.96407°E

A29°43'24.456"S; 26°57'50.652"E  
 B29°43'20.892"S; 26°57'59.508"E  
 C29°43'18.732"S; 26°58'5.448"E  
 D29°43'18.012"S; 26°58'9.624"E  
 E29°43'17.436"S; 26°58'14.304"E  
 F29°43'17.22"S; 26°58'17.904"E  
 G29°43'19.164"S; 26°58'18.012"E  
 H29°43'19.74"S; 26°58'12.864"E  
 I29°43'20.208"S; 26°58'8.112"E  
 J29°43'20.928"S; 26°58'6.204"E  
 K29°43'23.916"S; 26°57'57.636"E  
 L29°43'26.364"S; 26°57'51.768"E  
 A29°43'24.456"S; 26°57'50.652"E

Mining permit application area: 4.9 ha

**Client:**  
 Twin Youth Initiative Trading CC

**Consultant:**



**T 2926DB**