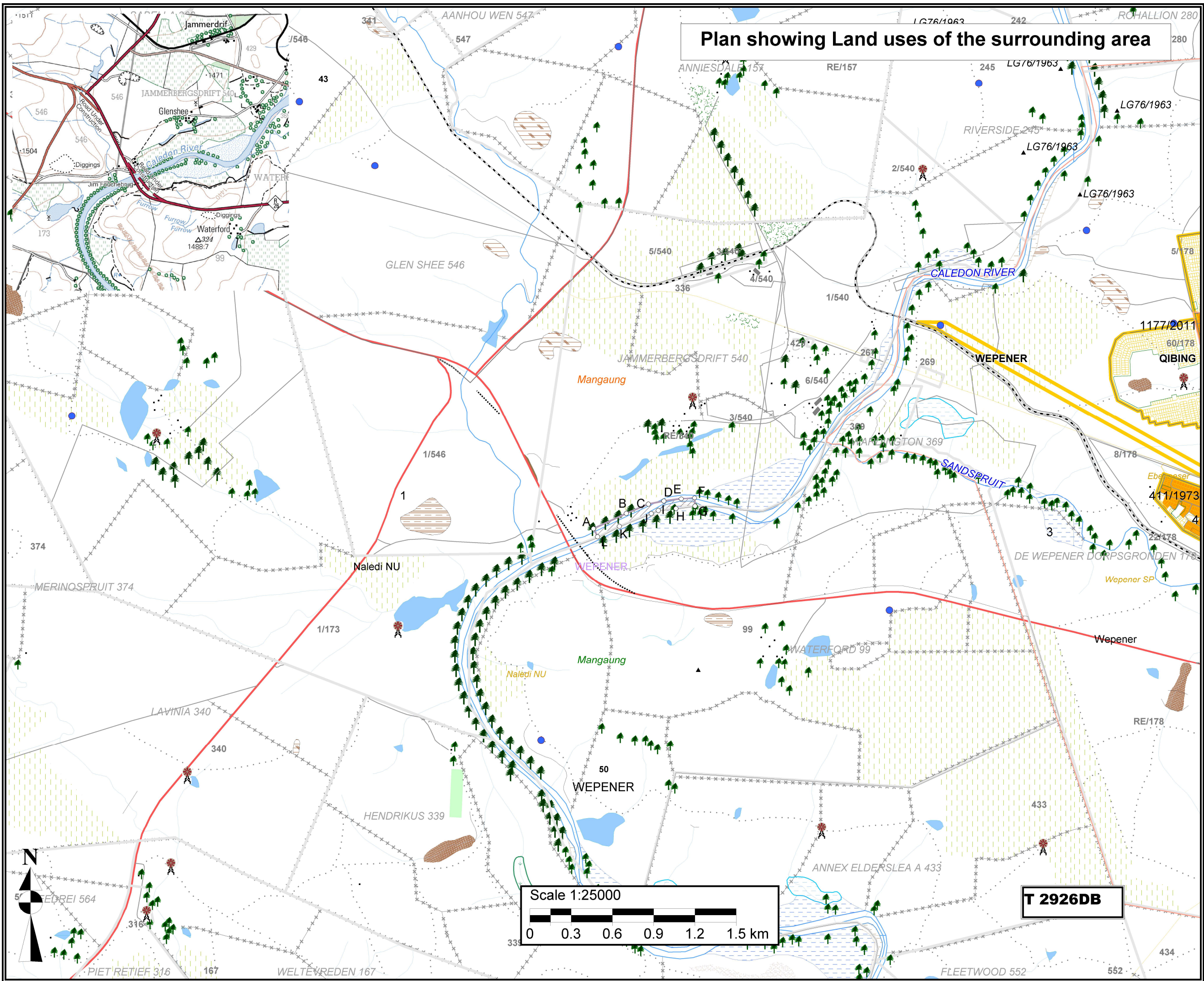


Plan showing Land uses of the surrounding area



- Legend**
- Artificial surfaces
 - DIGGING
 - Barriers
 - ANTI EROSION WALL
 - FENCE
 - Buildings
 - HOUSE
 - LARGE BUILDING
 - Drainage
 - FURROW
 - Inland water
 - DAM
 - NON-PERENNIAL PAN
 - River
 - NON-PERENNIAL CENTER LINE
 - PERENNIAL CENTER LINE
 - NON-PERENNIAL EXTENT
 - FLOOD BANK
 - SAND BANK
 - Roads
 - R26
 - TRACK FOOTPATH
 - Vegetation
 - CULTIVATED LAND
 - PLANTATION
 - TREE
 - WOODLAND
 - Water source
 - RESERVOIR
 - WINDPUMP
 - Mining permit area - 4.9ha
 - Administrative region: Wepener
 - Farm portions
 - Magisterial district: Wepener
 - Parent farms
 - Free State Province
 - Local Municipality: Mangaung
 - Wards 2016 - 50

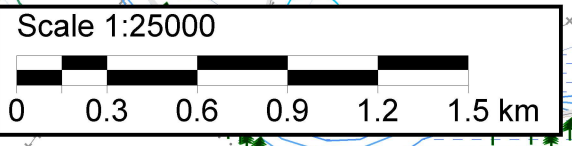
Proposed mining area coordinates:
 A29.72346°S; 26.96407°E
 B29.72247°S; 26.96653°E
 C29.72187°S; 26.96818°E
 D29.72167°S; 26.96934°E
 E29.72151°S; 26.97064°E
 F29.72145°S; 26.97164°E
 G29.72199°S; 26.97167°E
 H29.72215°S; 26.97024°E
 I29.72228°S; 26.96892°E
 J29.72248°S; 26.96839°E
 K29.72331°S; 26.96601°E
 L29.72399°S; 26.96438°E
 A29.72346°S; 26.96407°E

A29°43'24.456"S; 26°57'50.652"E
 B29°43'20.892"S; 26°57'59.508"E
 C29°43'18.732"S; 26°58'5.448"E
 D29°43'18.012"S; 26°58'9.624"E
 E29°43'17.436"S; 26°58'14.304"E
 F29°43'17.22"S; 26°58'17.904"E
 G29°43'19.164"S; 26°58'18.012"E
 H29°43'19.74"S; 26°58'12.864"E
 I29°43'20.208"S; 26°58'8.112"E
 J29°43'20.928"S; 26°58'6.204"E
 K29°43'23.916"S; 26°57'57.636"E
 L29°43'26.364"S; 26°57'51.768"E
 A29°43'24.456"S; 26°57'50.652"E

Mining permit application area:
 4.9 ha

Client:
 Twin Youth Initiative Trading CC

Consultant:



T 2926DB