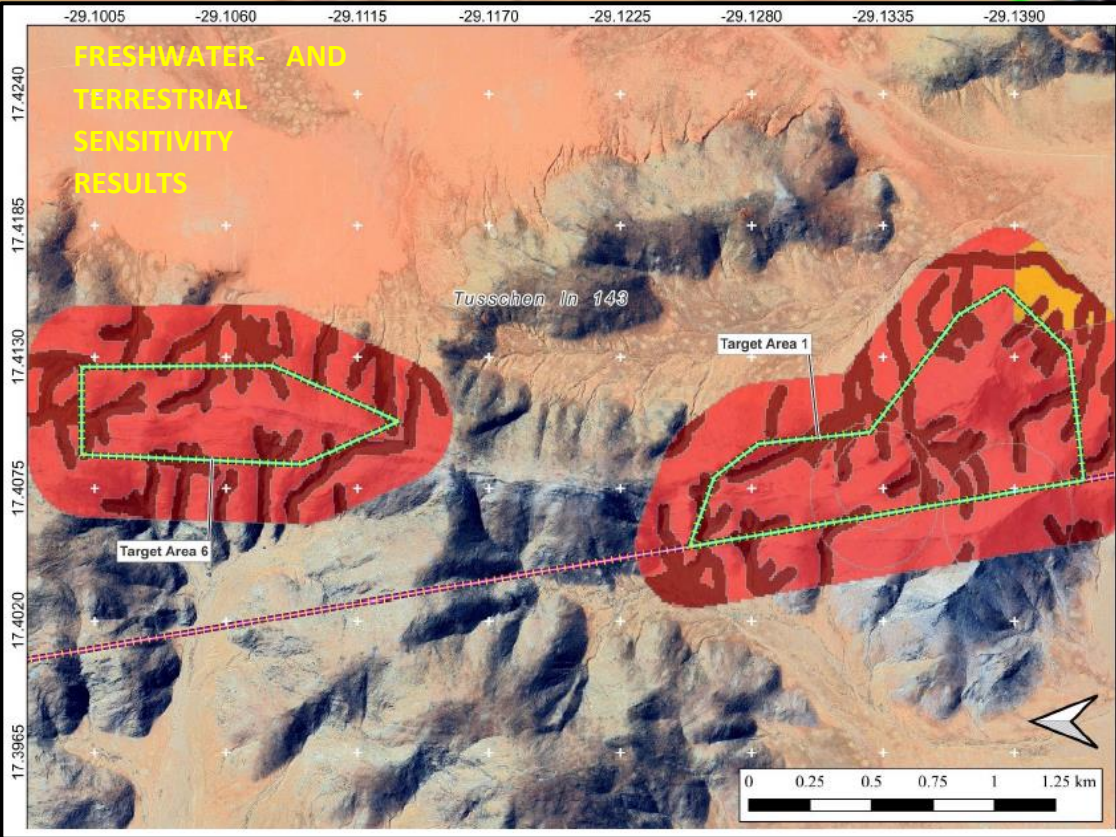
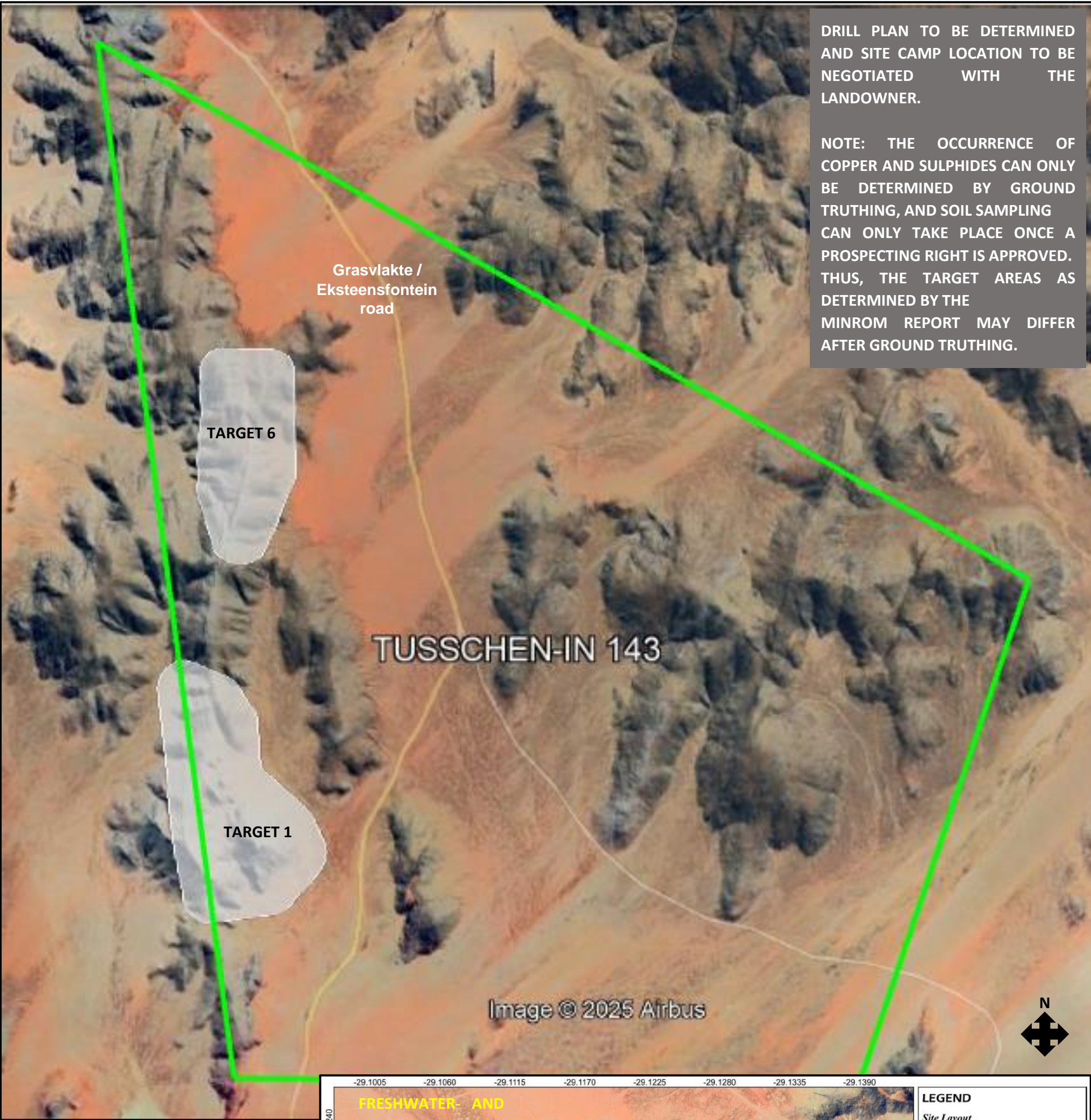


PRELIMINARY SITE PLAN FOR THE STRATA ENERGY MINERALS & RESOURCES (PTY) LTD PROPOSED INVASIVE PROSPECTING RIGHT AREAS OVER THE FARM TUSSCHEN-IN NO 143 - NC 30/5/1/1/2/14344 PR



LEGEND

Site Layout

- Namaqua PR Target Areas
- Farm Borders

Site Ecology

Sensitivities: Target Areas

- Very High
- High
- Medium

National Context

Site Locality

Date: April 2025
Compiler: Dr. J-H Keet
Map Datum: GCS WGS 84 (EPSG 4326)
Map Scale: 1:12 500

EcoFloristix
Specialist Botanical Surveys