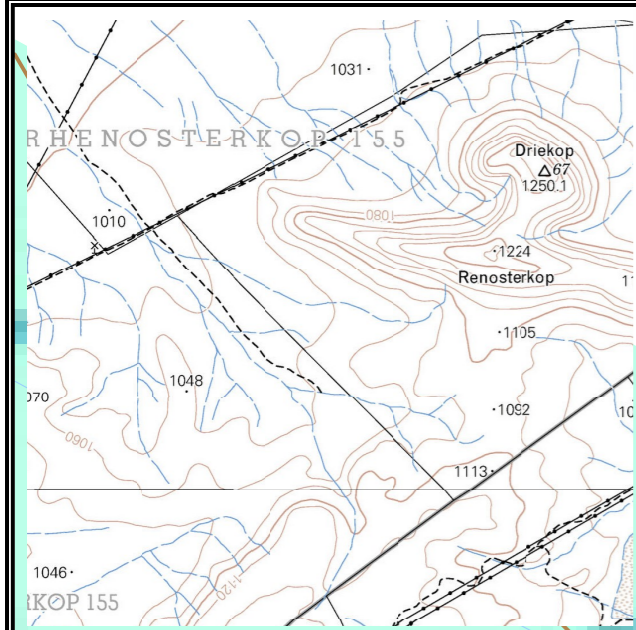
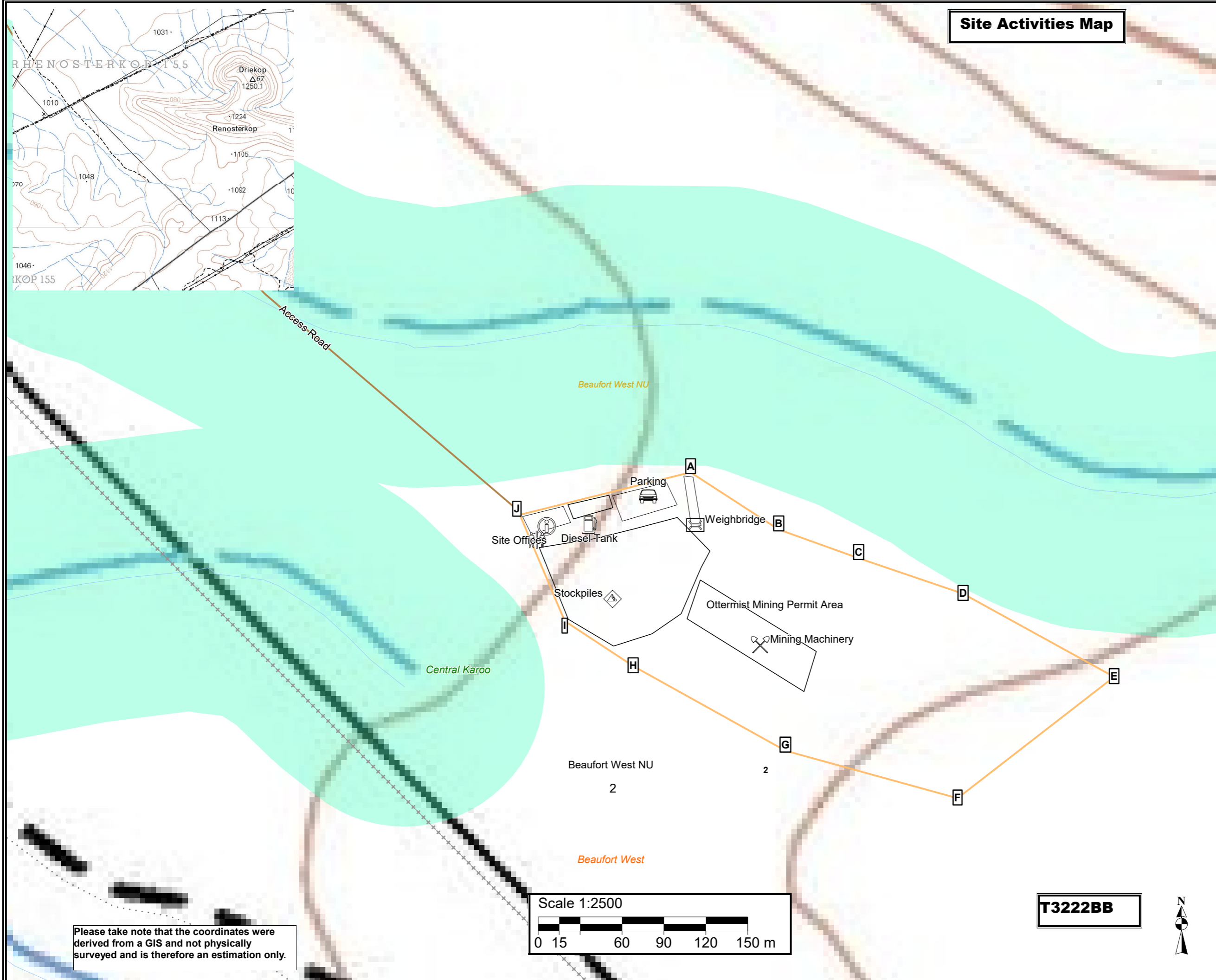


# Site Activities Map



- ### Legend
- Barriers**
    - FENCE
  - River**
    - DRY WATER COURSE CENTER LINE
    - NON-PERENNIAL CENTER LINE
  - Roads**
    - TRACK FOOTPATH
  - Administrative**
    - Western Cape Province
    - Central Karoo - District Municipality
    - Beaufort West - Local Municipality
    - Wards no - 2
    - Ottermist Mining Permit Area
  - Infrastructure**
    - Material Stockpiles
    - Mining Machinery
    - Weighbridge
    - Diesel Storage
    - Parking Area
    - Mobile Site office
    - 100m buffer
    - Access road
    - Site toilet

**Proposed mining area coordinates:**

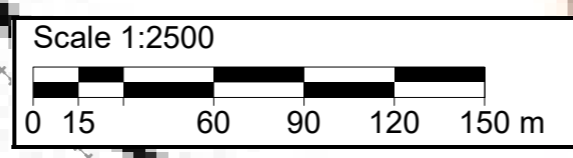
- A -32,239819°S; 22,88081°E
- B -32,240186°S; 22,881478°E
- C -32,240371°S; 22,882083°E
- D -32,240599°S; 22,882873°E
- E -32,241133°S; 22,884016°E
- F -32,241913°S; 22,882831°E
- G -32,241608°S; 22,881529°E
- H -32,241064°S; 22,880377°E
- I -32,240774°S; 22,879858°E
- J -32,240092°S; 22,879519°E
- A -32,239819°S; 22,88081°E

**Mining permit application area:**  
5 ha

**Client:**  
Otter Mist Trading (Pty) Ltd  
2017/238605/07

**Consultant:**  
greenmined environmental

Please take note that the coordinates were derived from a GIS and not physically surveyed and is therefore an estimation only.



**T3222BB**

