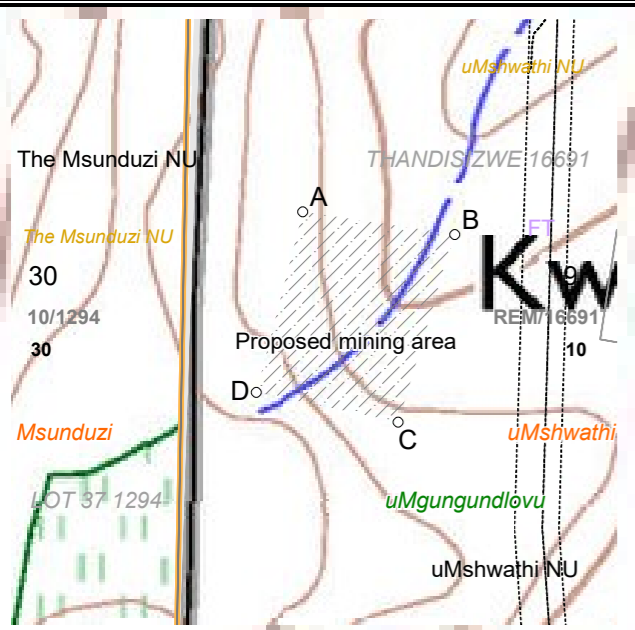
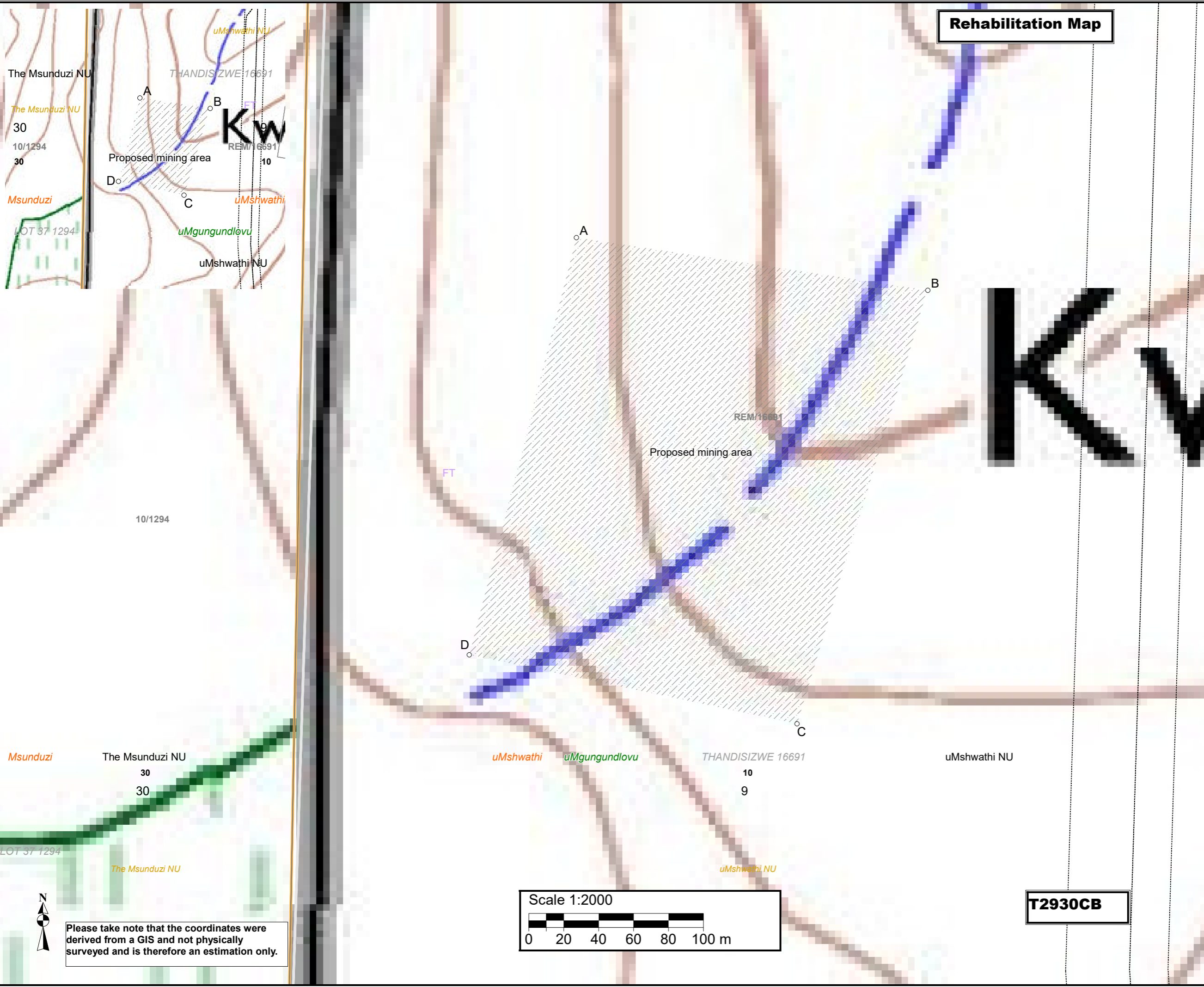


# Rehabilitation Map

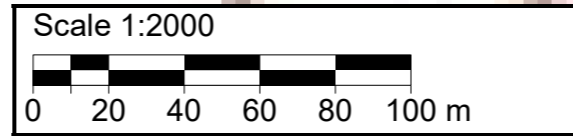
- Legend**
- Administrative regions
  - Farm portions
  - Magisterial districts
  - Parent farms
  - Provinces
  - uMgungundlovu - District Municipality
  - uMshwathi - Local Municipality
  - Wards no - 10
- The decommissioning phase will entail the reinstatement of the processing area by removing the stockpiled material, and site infrastructure/equipment and landscaping the disturbed footprints. The quarry pit will be developed into a minor landscape feature. This will entail creating a series of irregular benches along the quarry faces, the top edges of each face being blasted away to form scree slopes on the benches below, thereby reducing the overall face angle. The benches will be top-dressed with topsoil and vegetated with an appropriate grass mix if vegetation does not naturally establish in the area within six months of the replacement of the topsoil.



**Proposed mining area coordinates:**  
 A-29.525724°S; 30.433911°E  
 B-29.525996°S; 30.435987°E  
 C-29.528233°S; 30.435214°E  
 D-29.527877°S; 30.433278°E  
 A-29.525724°S; 30.433911°E

A29°31'32.606"S; 30°26'2.08"E  
 B29°31'33.586"S; 30°26'9.553"E  
 C29°31'41.639"S; 30°26'6.77"E  
 D29°31'40.357"S; 30°25'59.801"E  
 A29°31'32.606"S; 30°26'2.08"E

**Mining permit application area:**  
 4.9 ha



**T2930CB**

Please take note that the coordinates were derived from a GIS and not physically surveyed and is therefore an estimation only.

Client:



Consultant:

