



**Applicant:**  
Lafarge Industries South Africa Pty Ltd  
1 Manana Road Industrial Site  
Lichtenburg  
2470  
Tel: 018 633 3011  
Email: [uneysa.taljard@lafarge.com](mailto:uneysa.taljard@lafarge.com)

## REGISTRATION AND COMMENTING FORM

29 April 2022

To whom it may concern

**RE: NOTICE IS HEREBY GIVEN IN TERMS THE NATIONAL WATER ACT, 1998 (ACT 36 OF 1998). THE APPLICANT LAFARGE INDUSTRIES SOUTH AFRICA (PTY) LTD, SUBMITTED A WATER USE LICENCE APPLICATION ON THE FOLLOWING PROPERTIES:  
FARM LICHTENBURG TOWN AND TOWNLANDS 27, PORTION 1,30,32,61 AND 71. ERF 1024 PORTION 0, ERF 960 PORTION 0, NORTH WEST PROVINCE.**

### **BACKGROUND INFORMATION**

The Applicant, Lafarge Industries South Africa (Pty) Ltd is currently in the process of undertaking a Water Use Licence Applications (WULA) for operations in its Cement Factory in Lichtenburg, on Farm Lichtenburg Town and Townlands 27, portion 1,30,32,61 and 71. Erf 1024 portion 0, Erf 960 portion 0, North West Province.

Lafarge operates a cement manufacturing plant and two quarries in the North West Province (only one quarry is operating namely Tswana Quarry. The plant is connected to the Quarry via a railway line. However, due to the distance in between the two sites the Quarry falls within a different catchment area and therefore forms part of an application on its own.

The cement manufacturing plant is located approximately 2km north east of Lichtenburg and is within the Ditsobotla Local Municipality and Ngaka Modiri Molema District Municipality. The plant includes 4 kilns of which only two are still in use namely kiln 3 and kiln 4 and the associated raw material storage area, raw mills, coal mills, cement mills, cement silos and raw material preparation area. There is also the use of secondary materials as alternative fuels and raw materials occurring on site. The clinker produced at Lichtenburg is milled, packaged on site and distributed as cement.

The two quarries include the Lovedale quarry (currently the previous pit area is in the rehabilitation phase and the workshop area is still operating for maintaining the Lafarge trains), approximately 3km from the cement plant and the active Tswana quarry located about 45km from Lichtenburg.

**the goal isn't to live forever, it is to protect a planet that will**

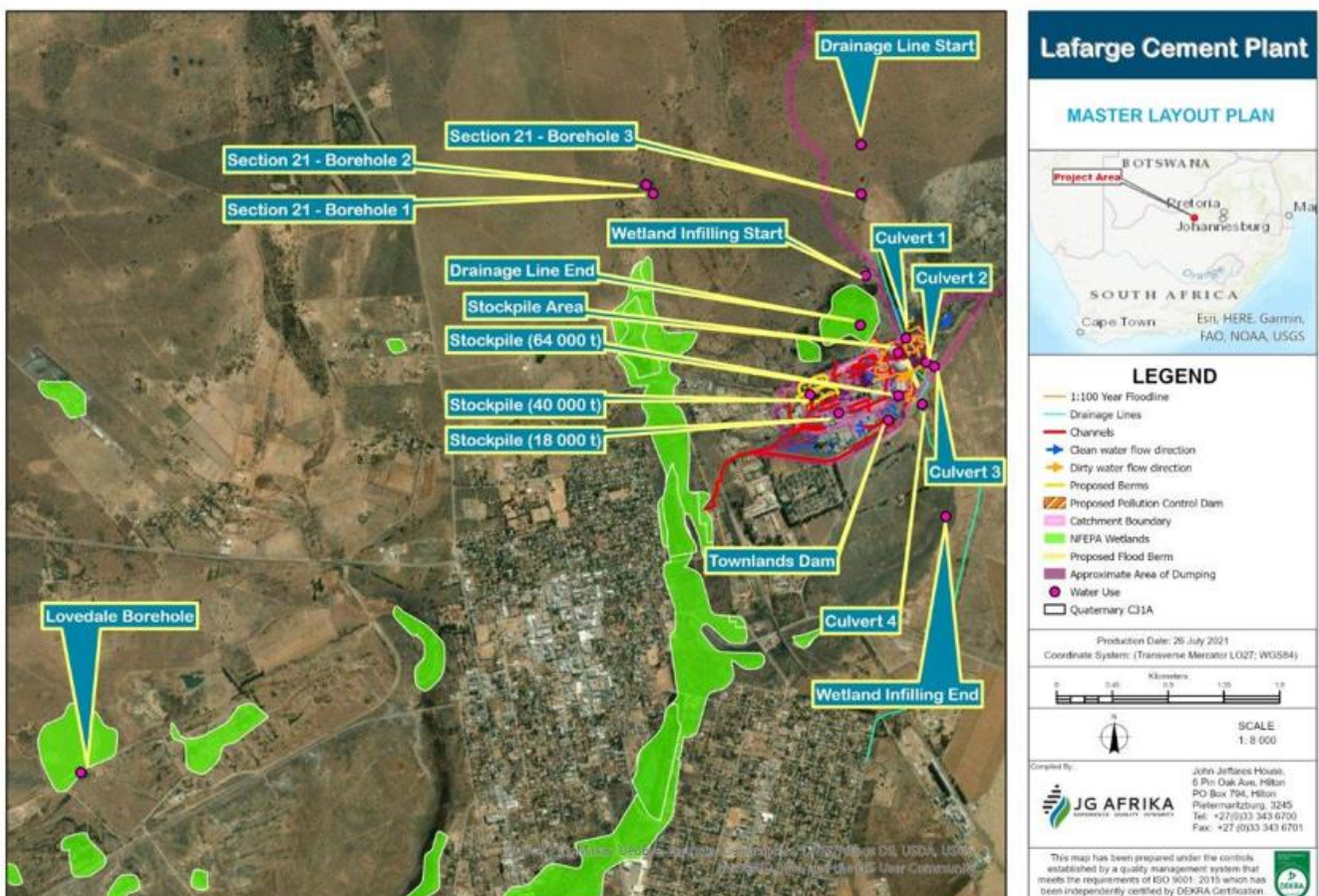
## BACKGROUND INFORMATION DOCUMENT

### SITE DESCRIPTION

As mentioned earlier, the site is located approximately 2km north east of Lichtenburg and is within the Ditsobotla Local Municipality and Ngaka Modiri Molema District Municipality. The water uses applied for are all within the following properties:

Farm Lichtenburg Town and Townlands 27, portion 1,30,32,61 and 71. Erf 1024 portion 0, Erf 960 portion 0, North West Province.

The extent of the Lafarge Lichtenburg Plant footprint is 98.667 ha with coordinates 26°82'52"S and 26°10'46"E.



**Figure 1:** Satellite view of the Lafarge Industries South Africa (Pty) Ltd in relation to the receiving environment (image obtained from preliminary Master Layout Plan: JG Africa).

## **BACKGROUND INFORMATION DOCUMENT**

### **LEGAL COMPLIANCE**

The Lafarge Lichtenburg Plant site triggers the following listed activities in terms of the National Water Act (Act 36 of 1998):

- DW760 Section 21 (a) - Taking water from water resource (Three boreholes and Townlands pit).
- DW780 Section 21 (h) -Disposing in any manner of water which contains waste from, or which has been heated in any industrial or power generation process.
- DW767 Section 21(g) - Disposing of waste in a manner which may detrimentally impact on a water resource.
- DW765 Section 21 (e) - Irrigation with water containing waste, artificial recharge of aquifer, modification of atmospheric precipitation and in-stream power generation activities (Garden areas x 10).
- DW763 Section 21 (c) - Impeding or diverting of the flow of water in a watercourse.
- DW768 Section 21 (i) Impeding or diverting of the flow of water in a watercourse.

### **PUBLIC INVOLVEMENT**

This document is to inform you about the proposed activity and to determine whether there are any concerns or objections from interested and affected parties (I&AP's) that need to be considered.

As interested and affected party you are kindly requested to complete the comments form and give any comment/concern or input with regard to the water use application.

Please contact Murchellin Saal at the contact details as presented in the letterhead or at [murchellin.s@greenmined.co.za](mailto:murchellin.s@greenmined.co.za) through any means should you need more information, have additional language requirements, have concerns or comments that need to be considered or if you want to be registered as an interested and/or affected party. If we do not receive any comments from you on or before 29 June 2022, it will be accepted that you do not have any objections/comments with regard to the project and do not require any further documentation.



**Applicant:**  
Lafarge Industries South Africa Pty Ltd  
1 Manana Road Industrial Site  
Lichtenburg  
2470  
Tel: 018 633 3011  
Email: [uneysa.taljard@lafarge.com](mailto:uneysa.taljard@lafarge.com)

**REGISTRATION AND COMMENTING FORM**

**CONTACT DETAILS**

Name/Name	
Organisation/Instansie	
Interest/Belange	
Postal Address/Pos Adres	
Tel	
Fax/Faks	
E-mail/E-pos	

**COMMENTS/ OPMERKINGS**

Object / No Objection:	
Request additional information:	
Concerns:	

**the goal isn't to live forever, it is to protect a planet that will**

**Signature:**

Greenmined Environmental (Pty) Ltd | Tel: 021 851 2673 | Fax: 086 546 0579  
Unit M01, Office No 36, AECI Site, Baker Square, Paardevlei, De Beers Avenue, Somerset West, 7130  
Postnet Suite 62, Private Bag x15, Somerset West, 7129  
Directors: S Smit; C Weideman | Reg No: 2012/055565/07 | VAT No. 4040263032



## BACKGROUND INFORMATION DOCUMENT

**Are there any other organisations or individuals that you feel should be invited to comment? If so, please provide their contact details:**

Contact name:
Organisation (if applicable):
Address:
Tel:
Fax
E-mail

Your feedback is valued and will be addressed appropriately.

Kind Regards

.....  
Murchellin Saal

Greenmined Environmental (Pty) Ltd