

Rehabilitation Map

- Legend**
- River
 - NON-PERENNIAL EXTENT
 - Vegetation
 - CULTIVATED LAND
 - TREE
 - Water source
 - RESERVOIR
 - WINDPUMP
 - Administrative region: Queenstown
 - Farm portions
 - Parent farms
 - Street names
 - mining permit area
 - Access Road

GENERAL REHABILITATION: The environment affected by the mining operations will be rehabilitated by the holder, as far as is practicable, to its natural state or to a predetermined and agreed to standard or land use which conforms with the concept of sustainable development. The affected environment will be maintained in a stable condition that will not be detrimental to the safety and health of humans and animals and that will not pollute the environment or lead to the degradation thereof. All gates and fences erected by the holder which is not required by the landowner/tenant, will be removed and the situation restored to the pre mining situation.

EXCAVATION AREA: Due to the impracticality of importing large volumes of fill to restore the quarry area to its original topography, the rehabilitation option is to develop the quarry into a minor landscape feature. This entails creating a series of irregular benches along the quarry faces, the top edges of each face being blasted away to form slopes on the benches below, thereby reducing the overall face angle or sloping the quarry to an acceptable slope as recommended by the DMR. Fill and topsoil was placed over the benches or slopes to provide a suitable medium for the establishment of vegetation, especially trees which will break up the line of the faces and enhance their appearance. The floor of the quarry will be capped with suitable soil material and re-vegetated. Rocks and coarse material removed from the excavation were dumped into the excavations. No waste will be deposited in the excavations.

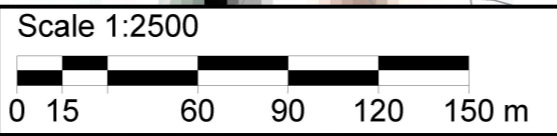
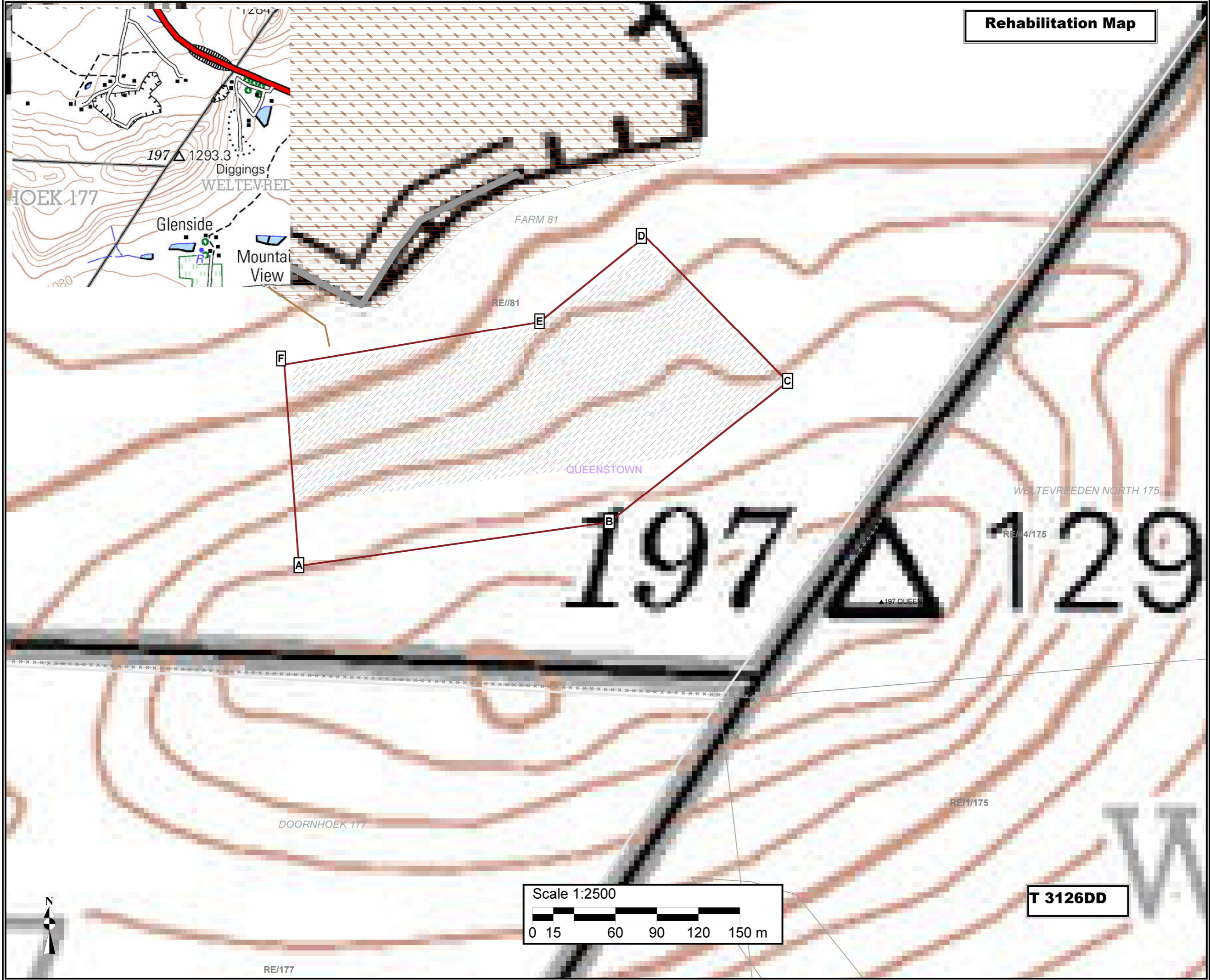
Proposed mining area coordinates:
 A -31.896028°S; 26.794833°E
 B -31.895746°S; 26.797197°E
 C -31.894833°S; 26.798556°E
 D -31.893889°S; 26.797472°E
 E -31.894444°S; 26.796667°E
 F -31.894722°S; 26.794722°E
 A -31.896028°S; 26.794833°E

A 31°53'45.701"S; 26°47'41.399"E
 B 31°53'44.686"S; 26°47'49.909"E
 C 31°53'41.399"S; 26°47'54.802"E
 D 31°53'38"S; 26°47'50.899"E
 E 31°53'39.998"S; 26°47'48.001"E
 F 31°53'40.999"S; 26°47'40.999"E
 A 31°53'45.701"S; 26°47'41.399"E

Mining permit application area:
 4.9 ha

Client:
 Komani Quarry Pty Ltd

Consultant:



T 3126DD