

The figure lettered A,B,C,D,E,F,A represents a mining permit area in extent approximately 4.9 hectares comprising of a portion of the remaining extent of the farm Leseyton 81 Registration division Queenstown Magisterial District Queenstown, Eastern Cape Province (Reference: EC 305/1/2/2/10_MP), (but subject to Regulation 17 of the mine Health and Safety Act. Excluding any area within 100 metres of any railway, cemetery, residential area, public area or within 100m of a public road), situated in the magisterial district of Queenstown, Eastern Cape Province for which Komani Quarry (Pty) Ltd with Registration no 2017/226796/07 has applied for a Mining Permit in terms of section 27 of the mineral and petroleum resources development act, 2002 (act 28 of 2002).

Applicant:	GIS Technician	Regional Manager
Date:	Greenmined	Eastern Cape Region
	Date:	Date:

- Legend**
- River
 - NON-PERENNIAL EXTENT
 - Vegetation
 - CULTIVATED LAND
 - TREE
 - Water source
 - RESERVOIR
 - WINDPUMP
 - Administrative region: Queenstown
 - Farm portions
 - Magisterial districts
 - Parent farms
 - Parks
 - Streets
 - Coordinate Name
 - mining permit area

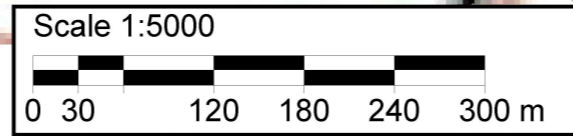
Proposed mining area coordinates:
 A -31.896028°S; 26.794833°E
 B -31.895746°S; 26.797197°E
 C -31.894833°S; 26.798556°E
 D -31.893889°S; 26.797472°E
 E -31.894444°S; 26.796667°E
 F -31.894722°S; 26.794722°E
 A -31.896028°S; 26.794833°E

A 31°53'45.701"S; 26°47'41.399"E
 B 31°53'44.686"S; 26°47'49.909"E
 C 31°53'41.399"S; 26°47'54.802"E
 D 31°53'38"S; 26°47'50.899"E
 E 31°53'39.998"S; 26°47'48.001"E
 F 31°53'40.999"S; 26°47'40.999"E
 A 31°53'45.701"S; 26°47'41.399"E

Mining permit application area:
 4.9 ha

Client:
 Komani Quarry Pty
 Ltd

Consultant:



T 3126DD