

LAND USE MAP

DETAILS OF LAND UNDER APPLICATION

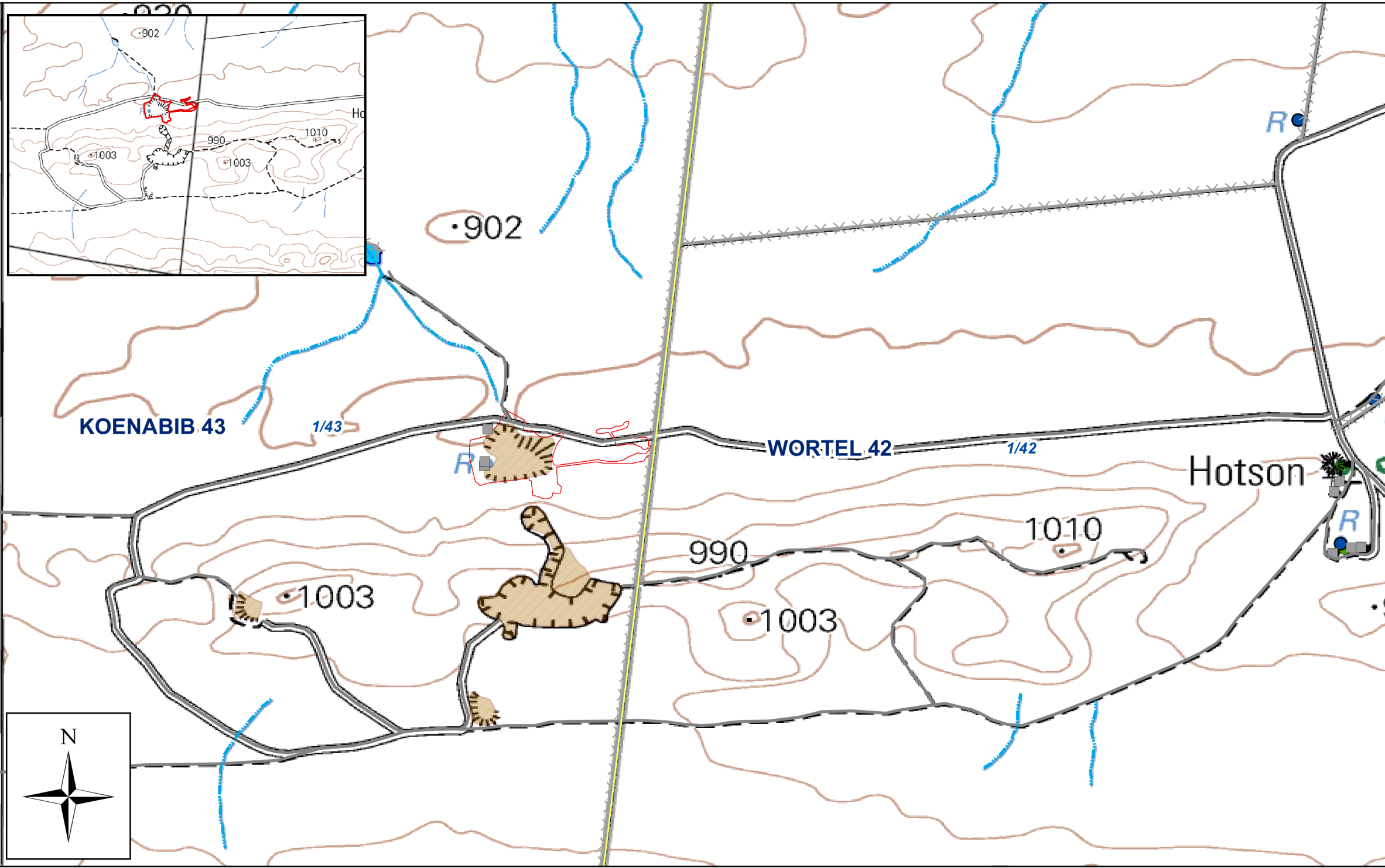
PROVINCE: NORTHERN CAPE
 MAGISTERIAL DISTRICT: NAMAQUALAND
 A PORTION OF PORTION 1 OF FARM KOENABIB 43
 AREA (Hectares): 4,920782

SCALE	PAGE SIZE	SCALE BAR
1 : 14 000	A3	150 75 0 150 300 Meters

Legend

- Farm portions
- Parent farms
- Fencing
- River - Non perennial
- Roads
- Buildings
- Reservoir
- Windpump
- Vegetation
- Dam
- Artificial surfaces - Eroded Area
- Application area

APPLICANT: JACOB DE CLERCQ VAN ZYL
 PREPARED BY: ASSET MAPPING SOLUTIONS
 TEL: 072 736 0661
 EMAIL: info@assetmapping.co.za



GEOGRAPHIC CO-ORDINATES SYSTEM
 CO-ORDINATE SYSTEM: GCS WGS 1984
 DATUM: WGS 1984
 UNITS: DEGREE

Point	Latitude	Longitude	Point	Latitude	Longitude	Point	Latitude	Longitude	Point	Latitude	Longitude	Point	Latitude	Longitude	Point	Latitude	Longitude	Point	Latitude	Longitude	Point	Latitude	Longitude
1	-29,064288	18,763346	16	-29,064170	18,765987	31	-29,064503	18,768461	46	-29,064101	18,767033	61	-29,063926	18,767806	76	-29,064505	18,768558	91	-29,064909	18,766927	106	-29,065442	18,765070
2	-29,064145	18,763888	17	-29,064386	18,765822	32	-29,064543	18,768358	47	-29,064084	18,766954	62	-29,063981	18,767658	77	-29,064571	18,768552	92	-29,065055	18,765794	107	-29,065430	18,765024
3	-29,064105	18,763916	18	-29,064512	18,765768	33	-29,064555	18,768295	48	-29,064066	18,766922	63	-29,064013	18,767545	78	-29,064611	18,768515	93	-29,065516	18,765821	108	-29,065430	18,765024
4	-29,063863	18,764118	19	-29,064823	18,765656	34	-29,064536	18,768243	49	-29,064013	18,766926	64	-29,064063	18,767341	79	-29,064709	18,768467	94	-29,065621	18,765938	109	-29,065350	18,765011
5	-29,063736	18,764194	20	-29,064987	18,765726	35	-29,064492	18,768208	50	-29,063981	18,766985	65	-29,064284	18,767507	80	-29,064728	18,768403	95	-29,065789	18,765903	110	-29,065378	18,764926
6	-29,063603	18,764284	21	-29,065003	18,765815	36	-29,064417	18,768039	51	-29,063954	18,767082	66	-29,064267	18,767690	81	-29,064751	18,768357	96	-29,065805	18,765862	111	-29,065428	18,764560
7	-29,063445	18,764380	22	-29,064837	18,766953	37	-29,064390	18,767945	52	-29,063948	18,767188	67	-29,064233	18,767917	82	-29,064821	18,768318	97	-29,065784	18,765739	112	-29,065476	18,764086
8	-29,063714	18,764881	23	-29,064898	18,767301	38	-29,064400	18,767774	53	-29,063968	18,767342	68	-29,064219	18,768125	83	-29,064874	18,768285	98	-29,065786	18,765696	113	-29,065505	18,763887
9	-29,064019	18,764861	24	-29,064892	18,767506	39	-29,064437	18,767582	54	-29,063896	18,767476	69	-29,064212	18,768254	84	-29,064897	18,768210	99	-29,065890	18,765667	114	-29,065578	18,763609
10	-29,064066	18,765166	25	-29,064848	18,767690	40	-29,064457	18,767526	55	-29,063895	18,767547	70	-29,064211	18,768344	85	-29,064929	18,768019	100	-29,065928	18,765633	115	-29,065460	18,763485
11	-29,064185	18,765331	26	-29,064753	18,767852	41	-29,064422	18,767481	56	-29,063865	18,767671	71	-29,064234	18,768396	86	-29,064945	18,767961	101	-29,065950	18,765553	116	-29,064802	18,763329
12	-29,064207	18,765513	27	-29,064653	18,768110	42	-29,064330	18,767472	57	-29,063796	18,767717	72	-29,064280	18,768415	87	-29,064960	18,767712	102	-29,065962	18,765466	117	-29,064622	18,763324
13	-29,064138	18,765746	28	-29,064676	18,768276	43	-29,064074	18,767281	58	-29,063750	18,767780	73	-29,064386	18,768419	88	-29,064947	18,767505	103	-29,065929	18,765341	118	-29,064485	18,763326
14	-29,064073	18,765950	29	-29,064665	18,768341	44	-29,064065	18,767239	59	-29,063748	18,767859	74	-29,064452	18,768415	89	-29,064945	18,767297	104	-29,065881	18,765274	119	-29,064418	18,763330
15	-29,064121	18,765987	30	-29,064560	18,768435	45	-29,064089	18,767116	60	-29,063830	18,767847	75	-29,064451	18,768541	90	-29,064946	18,767167	105	-29,065866	18,765130			