

**Palaeontological Impact Assessment for the
proposed Mining Right Application southwest of
Ermelo,
Mpumalanga Province**

Site Visit Report (Phase 2)

For

Beyond Heritage

07 March 2022

Prof Marion Bamford
Palaeobotanist
P Bag 652, WITS 2050
Johannesburg, South Africa
Marion.bamford@wits.ac.za

Expertise of Specialist

The Palaeontologist Consultant: Prof Marion Bamford

Qualifications: PhD (Wits Univ, 1990); FRSSAf, ASSAf

Experience: 33 years research; 25 years PIA studies

Declaration of Independence

This report has been compiled by Professor Marion Bamford, of the University of the Witwatersrand, sub-contracted by Beyond Heritage, Modimolle, South Africa. The views expressed in this report are entirely those of the author and no other interest was displayed during the decision making process for the Project.

Specialist: Prof Marion Bamford

A handwritten signature in blue ink, appearing to read 'M Bamford', with a horizontal line underneath it.

Signature:

Executive Summary

A Palaeontological Impact Assessment was requested for the mining right application by Inzalo Crushing and Aggregates (Pty) Ltd to mine dolerite on a portion of Portion 15 of Farm Rietspruit 437, southwest of Ermelo, Mpumalanga Province.

To comply with the regulations of the South African Heritage Resources Agency (SAHRA) in terms of Section 38(8) of the National Heritage Resources Act, 1999 (Act No. 25 of 1999) (NHRA), a site visit (Phase 2) Palaeontological Impact Assessment (PIA) was completed for the proposed development.

The proposed site lies on the non-fossiliferous Jurassic dolerite but is very close to the very highly sensitive Vryheid Formation that could preserve fossil plants of the Glossopteris flora. NO FOSSILS were found during the site visit. Nonetheless a Fossil Chance Find Protocol should be added to the EMP. Based on this information it is recommended that no further palaeontological impact assessment is required unless fossils are found by the developer/ environmental officer/ other designated responsible person once excavations/drilling/mining activities have commenced. As far as the palaeontology is concerned, the project should be authorised.

Table of Contents

Expertise of Specialist	1
Declaration of Independence	1
1. Background	4
2. Methods and Terms of Reference.....	7
3. Geology and Palaeontology.....	8
i. Project location and geological context	8
ii. Palaeontological context.....	9
iii. Site visit observations	10
4. Impact assessment.....	13
5. Assumptions and uncertainties.....	14
6. Recommendation.....	14
7. References	15
8. Chance Find Protocol	15
9. Appendix A – Examples of fossils from the	17
10. Appendix B – Details of specialist.....	18
Figure 1: Google Earth map of the area around the project	6
Figure 2: Google Earth map of the project site.....	7
Figure 3: Geological map of the area around the project site.....	8
Figure 4: SAHRIS palaeosensitivity map for the site for the proposed	10
Figures 5-6: Site visit photographs	11

1. Background

Inzalo Crushing and Aggregates (Pty) Ltd (hereinafter referred to as “the Applicant”) applied for a mining permit to mine stone aggregate/ gravel on a portion of Portion 15 on Farm Rietspruit 437, IS, Msukaligwa Local Municipality, Mpumalanga Province.

The proposed mining footprint will be 4.9 ha and will be developed over an undisturbed area of the farm. The mining method will make use of blasting in order to loosen the hard rock; the material will then be loaded and hauled to the crushing plant where it will be screened to various sized stockpiles. The aggregate will be stockpiled until it is transported from site using tipper trucks. All mining related activities will be contained within the approved mining permit boundaries (Figures 1, 2).

The proposed mining footprint will be 4.9 ha and will be developed over an undisturbed area of the farm. The mining method will make use of blasting in order to loosen the hard rock; the material will then be loaded and hauled to the crushing plant where it will be screened to various sized stockpiles. The aggregate will be stockpiled until it is transported from site using tipper trucks. All mining related activities will be contained within the approved mining permit boundaries.

The applicant intends to win material from the area for at least 2 years with a possible extension of another 3 years. The aggregate to be removed from the quarry will be used local construction and building projects in the vicinity. The proposed quarry will therefore contribute to the upgrading / maintenance of road infrastructure and building contracts in and around the Ermelo area.

The mining activities will consist out of the following: stripping and stockpiling of topsoil, blasting, excavating; crushing & Screening, stockpiling and transporting. After the project the area will be re-habilitated.

A Palaeontological Impact Assessment was requested for the Inzalo mining project although the site is indicated as have insignificant sensitivity. To comply with the regulations of the South African Heritage Resources Agency (SAHRA) in terms of Section 38(8) of the National Heritage Resources Act, 1999 (Act No. 25 of 1999) (NHRA), a site visit and walkthrough (Phase 2) Palaeontological Impact Assessment (PIA) was completed for the proposed development and is reported herein.

Table 1: Specialist report requirements in terms of Appendix 6 of the EIA Regulations (amended 2017)

	A specialist report prepared in terms of the Environmental Impact Regulations of 2017 must contain:	Relevant section in report
ai	Details of the specialist who prepared the report	Appendix B

	A specialist report prepared in terms of the Environmental Impact Regulations of 2017 must contain:	Relevant section in report
aii	The expertise of that person to compile a specialist report including a curriculum vitae	Appendix B
b	A declaration that the person is independent in a form as may be specified by the competent authority	Page 1
c	An indication of the scope of, and the purpose for which, the report was prepared	Section 1
ci	An indication of the quality and age of the base data used for the specialist report: SAHRIS palaeosensitivity map accessed – date of this report	Yes
cii	A description of existing impacts on the site, cumulative impacts of the proposed development and levels of acceptable change	Section 5
d	The date and season of the site investigation and the relevance of the season to the outcome of the assessment	N/A
e	A description of the methodology adopted in preparing the report or carrying out the specialised process	Section 2
f	The specific identified sensitivity of the site related to the activity and its associated structures and infrastructure	Section 4
g	An identification of any areas to be avoided, including buffers	N/A
h	A map superimposing the activity including the associated structures and infrastructure on the environmental sensitivities of the site including areas to be avoided, including buffers;	N/A
i	A description of any assumptions made and any uncertainties or gaps in knowledge;	Section 5
j	A description of the findings and potential implications of such findings on the impact of the proposed activity, including identified alternatives, on the environment	Section 4
k	Any mitigation measures for inclusion in the EMPr	Section 8, Appendix A
l	Any conditions for inclusion in the environmental authorisation	N/A
m	Any monitoring requirements for inclusion in the EMPr or environmental authorisation	Section 8, Appendix A
ni	A reasoned opinion as to whether the proposed activity or portions thereof should be authorised	Section 6
nii	If the opinion is that the proposed activity or portions thereof should be authorised, any avoidance, management and mitigation measures that should be included in the EMPr, and where applicable, the closure plan	Sections 6, 8
o	A description of any consultation process that was undertaken during the course of carrying out the study	N/A
p	A summary and copies if any comments that were received during any consultation process	N/A

	A specialist report prepared in terms of the Environmental Impact Regulations of 2017 must contain:	Relevant section in report
q	Any other information requested by the competent authority.	N/A

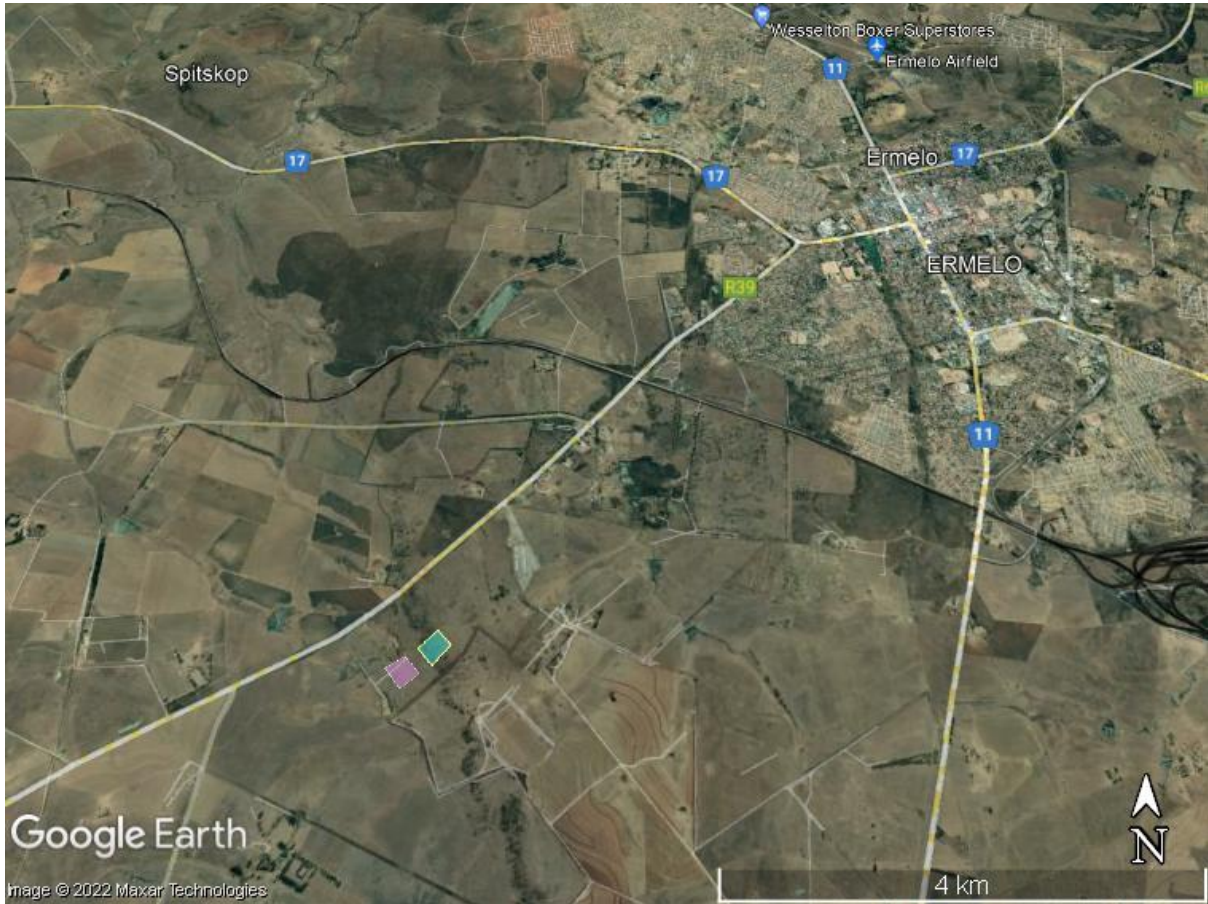


Figure 1: Google Earth map of the proposed development showing the relevant land marks. The turquoise polygon represents the study area.



Figure 2: Google Earth map of the proposed areas for a Mining Right application on portion 15 of Farm Rietspruit 437. The turquoise polygon represents the study area.

2. Methods and Terms of Reference

The Terms of Reference (ToR) for this study were to undertake a PIA and provide feasible management measures to comply with the requirements of SAHRA.

The methods employed to address the ToR included:

1. Consultation of geological maps, literature, palaeontological databases, published and unpublished records to determine the likelihood of fossils occurring in the affected areas. Sources included records housed at the Evolutionary Studies Institute at the University of the Witwatersrand and SAHRA databases;
2. Where necessary, site visits by a qualified palaeontologist to locate any fossils and assess their importance, as is the case here;
3. Where appropriate, collection of unique or rare fossils with the necessary permits for storage and curation at an appropriate facility (*not applicable to this assessment*); and
4. Determination of fossils' representivity or scientific importance to decide if the fossils can be destroyed or a representative sample collected (*not applicable to this assessment*).

3. Geology and Palaeontology

i. Project location and geological context

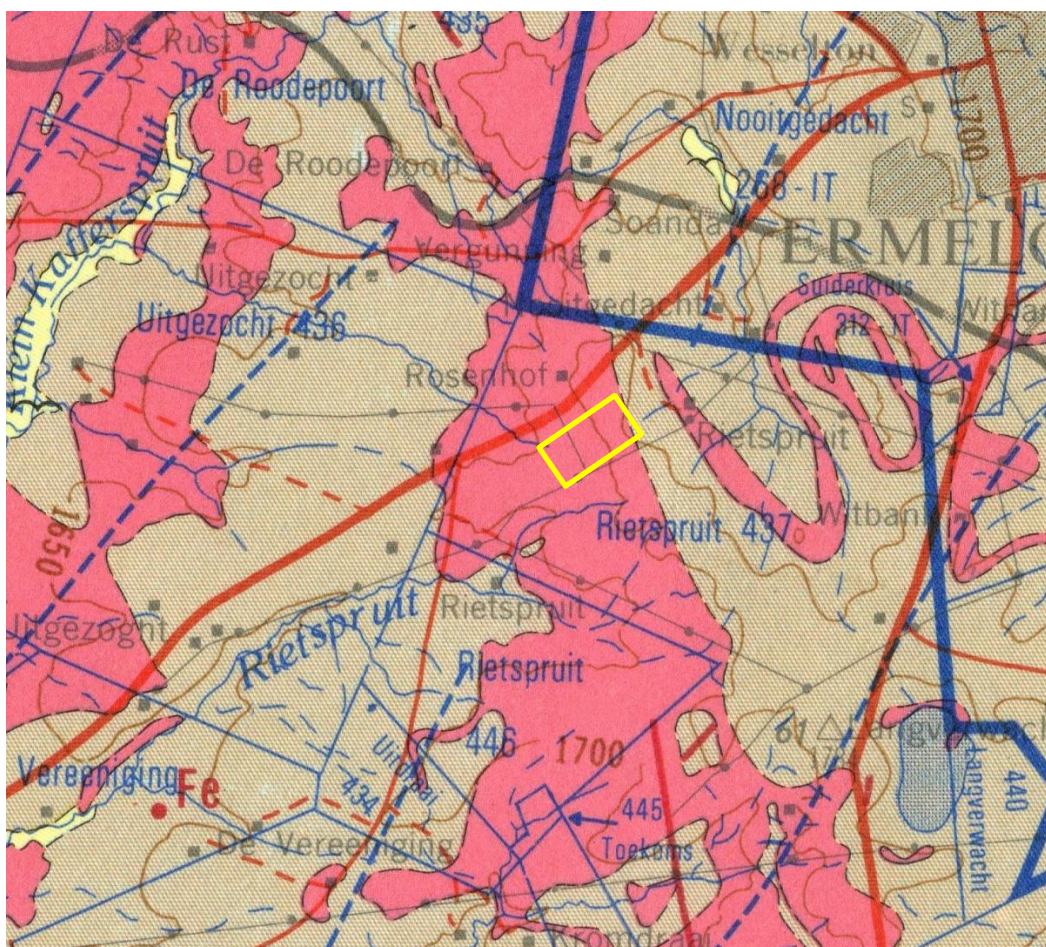


Figure 3: Geological map of the area around the proposed MRA sites SW of Ermelo. The location of the proposed project is indicated within the yellow rectangle. Abbreviations of the rock types are explained in Table 2. Map enlarged from the Geological Survey 1: 250 000 map 2628 Eat Rand.

Table 2: Explanation of symbols for the geological map and approximate ages (Johnson et al., 2006). SG = Supergroup; Fm = Formation; Ma = million years; grey shading = formations impacted by the project.

Symbol	Group/Formation	Lithology	Approximate Age
Q	Quaternary	Alluvium, sand, calcrete	Neogene, ca 2.5 Ma to present
Jd	Jurassic dykes	Dolerite dykes, intrusive	Jurassic, approx. 180 Ma
Pv	Vryheid Fm, Ecca Group, Karoo SG	Shales, sandstone, coal	Early Permian, Middle Ecca

The site lies in the northeastern part of the Karoo Basin. Considerably younger sands and alluvium have been deposited along the water courses (Figure 3).

The Karoo Supergroup rocks cover a very large proportion of South Africa and extend from the northeast (east of Pretoria) to the southwest and across to almost the KwaZulu Natal south coast. It is bounded along the southern margin by the Cape Fold Belt and along the northern margin by the much older Transvaal Supergroup rocks. Representing some 120 million years (300 – 183Ma), the Karoo Supergroup rocks have preserved a diversity of fossil plants, insects, vertebrates and invertebrates.

During the Carboniferous Period South Africa was part of the huge continental landmass known as Gondwanaland and it was positioned over the South Pole. As a result, there were several ice sheets that formed and melted, and covered most of South Africa. Gradual melting of the ice as the continental mass moved northwards and the earth warmed, formed fine-grained sediments in the large inland sea. These are the oldest rocks in the system and are exposed around the outer part of the ancient Karoo Basin, and are known as the Dwyka Group (Johnson et al., 2006).

Overlying the Dwyka Group rocks are rocks of the Ecca Group that are Early Permian in age. There are eleven formations recognised in this group but they do not all extend throughout the Karoo Basin. In the Free State, Mpumalanga and KwaZulu Natal, from the base upwards are the Pietermaritzburg Formation, **Vryheid Formation** and the Volksrust Formation. All of these sediments have varying proportions of sandstones, mudstones, shales and siltstones and represent shallow to deep water settings, deltas, rivers, streams and overbank depositional environments.

Overlying the Ecca Group are the rocks of the Beaufort Group and the Stormberg Group, capped by the Drakensberg basalts. As with the older Karoo sediments, the formations vary across the Karoo Basin. Large exposures of Jurassic dolerite dykes occur throughout the area. These intruded through the Karoo sediments around 183 million years ago at about the same time as the Drakensberg basaltic eruption.

ii. Palaeontological context

The palaeontological sensitivity of the area under consideration is presented in Figure 4. The site for mining is on Jurassic dolerite that has insignificant or zero palaeosensitivity, but is very close to the very highly sensitive Vryheid Formation (Ecca Group, Karoo Supergroup).

Dolerite is an intrusive volcanic rock and does not preserve any fossils, but the Vryheid Formation in some areas is rich in plant fossils of the *Glossopteris* flora. This includes *Glossopteris* leaves, reproductive structures, stems and roots, lycopods, sphenophytes, ferns and early gymnosperms (Plumstead, 1969; Anderson and Anderson, 1985; Bamford, 2004). No vertebrates are known from the Vryheid Formation because few were around at that time, and conditions for preservation of plants and animals are different (Cowan, 1995).

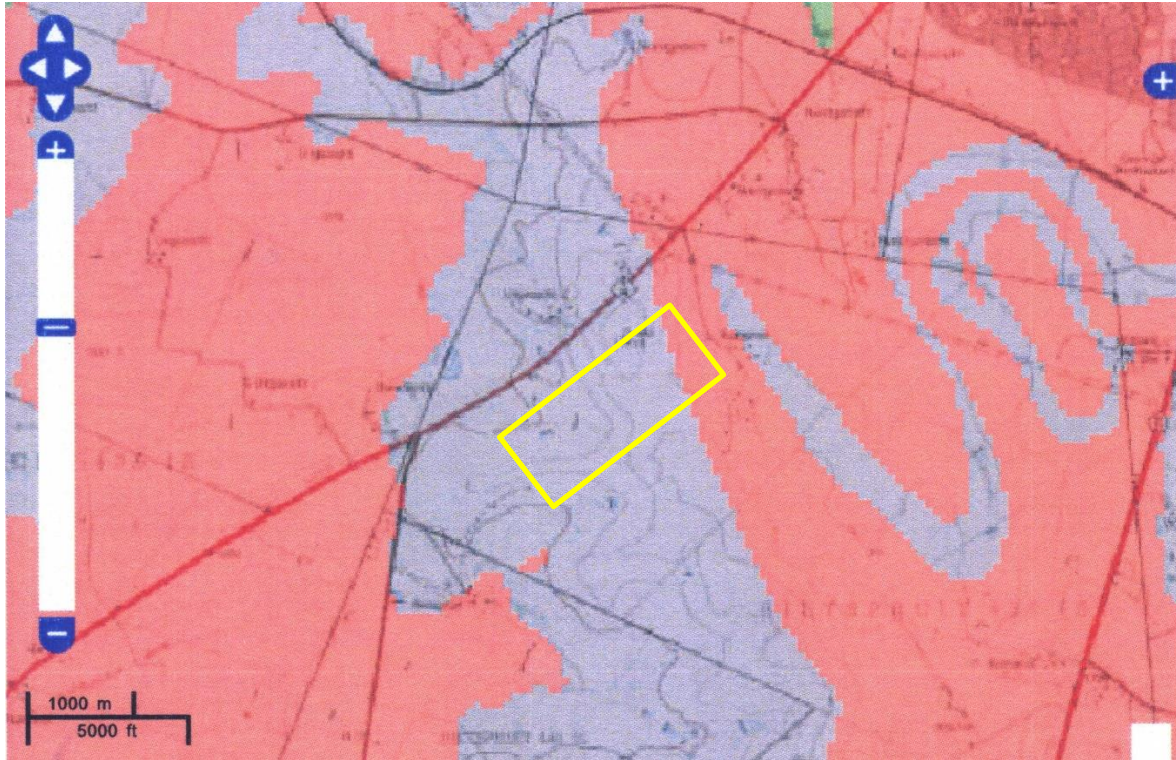


Figure 4: SAHRIS palaeosensitivity map for the site for the proposed Ermelo Sites 1&2 MRA shown within the yellow rectangle. Background colours indicate the following degrees of sensitivity: red = very highly sensitive; orange/yellow = high; green = moderate; blue = low; grey = insignificant/zero.

iii. Site visit observations

Both areas were walked through and the rocks studied. Only deep soils as exposed in the erosion channels, soils and dolerite outcrops were seen (Figures 5, 6). There were no Vryheid Formation shales in the project footprint and NO FOSSILS were seen.

Photographs were taken by the archaeologists.



Figure 5: Site photographs. A – donga or erosion channel showing deep sols and no rocks. B – dolerite ridge and no fossils.



Figure 6: Site photographs. C – thick grassland over deep soils. D – another dolerite outcrop forming a ridge.

4. Impact assessment

An assessment of the potential impacts to possible palaeontological resources considers the criteria encapsulated in Table :

Table 4a: Criteria for assessing impacts

PART A: DEFINITION AND CRITERIA		
Criteria for ranking of the SEVERITY/NATURE of environmental impacts	H	Substantial deterioration (death, illness or injury). Recommended level will often be violated. Vigorous community action.
	M	Moderate/ measurable deterioration (discomfort). Recommended level will occasionally be violated. Widespread complaints.
	L	Minor deterioration (nuisance or minor deterioration). Change not measurable/ will remain in the current range. Recommended level will never be violated. Sporadic complaints.
	L+	Minor improvement. Change not measurable/ will remain in the current range. Recommended level will never be violated. Sporadic complaints.
	M+	Moderate improvement. Will be within or better than the recommended level. No observed reaction.
	H+	Substantial improvement. Will be within or better than the recommended level. Favourable publicity.
Criteria for ranking the DURATION of impacts	L	Quickly reversible. Less than the project life. Short term
	M	Reversible over time. Life of the project. Medium term
	H	Permanent. Beyond closure. Long term.
Criteria for ranking the SPATIAL SCALE of impacts	L	Localised - Within the site boundary.
	M	Fairly widespread – Beyond the site boundary. Local
	H	Widespread – Far beyond site boundary. Regional/ national
PROBABILITY (of exposure to impacts)	H	Definite/ Continuous
	M	Possible/ frequent
	L	Unlikely/ seldom

Table 4b: Impact Assessment

PART B: Assessment		
SEVERITY/NATURE	H	-
	M	-
	L	Soils and dolerite do not preserve plant fossils; so far there are no records from the Jurassic dolerite of plant or animal fossils in this region so it is very unlikely that fossils occur on the site. The impact would be very unlikely.
	L+	-
	M+	-

PART B: Assessment		
	H+	-
DURATION	L	-
	M	-
	H	Where manifest, the impact will be permanent.
SPATIAL SCALE	L	Since the only possible fossils within the adjacent area would be fossil plants from the <i>Glossopteris</i> flora in the shales, the spatial scale will be localised within the site boundary.
	M	-
	H	-
PROBABILITY	H	-
	M	-
	L	It is extremely unlikely that any fossils would be found in the dolerite that will be mined but they could be near by. Therefore, a Fossil Chance Find Protocol should be added to the eventual EMPr.

Based on the nature of the project, surface activities may impact upon the fossil heritage if preserved in the development footprint. The geological structures suggest that the rocks are the correct age and type to preserve fossils, but they would be unlikely in the Jurassic dolerite. The site visit and walk through confirmed that there were NO FOSSILS in the project footprint. Furthermore, the material to be mined is dolerite and this does not preserve fossils. Since there is an extremely small chance that fossils from the adjacent Vryheid Formation and may be disturbed a Fossil Chance Find Protocol has been added to this report. Taking account of the defined criteria, the potential impact to fossil heritage resources is extremely low.

5. Assumptions and uncertainties

Based on the geology of the area and the palaeontological record as we know it, it can be assumed that the formation and layout of the dolomites, sandstones, shales and sands are typical for the country and do not contain fossil plant, insect, invertebrate and vertebrate material. The site visit and walk through confirmed that there are NO FOSSILS in the dolerite. The sands of the Quaternary period would not preserve fossils.

6. Recommendation

Based on the fossil record but confirmed by the site visit and walk through there are NO FOSSILS of any kind in the footprint but there is a small chance that flora in the nearby Vryheid Formation might be disturbed in part of the peripheral activities of the blasting, mining and transporting of rock. It is extremely unlikely that any fossils would be preserved in the overlying soils and sands of the Quaternary. Nonetheless, a Fossil Chance Find Protocol should be added to the EMPr. If fossils are found by the environmental

officer, or other responsible person during peripheral activities they should be rescued and a palaeontologist called to assess and collect a representative sample.

7. References

Anderson, J.M., Anderson, H.M., 1985. Palaeoflora of Southern Africa: Prodrum of South African megafloras, Devonian to Lower Cretaceous. A.A. Balkema, Rotterdam. 423 pp.

Bamford, M.K. 2004. Diversity of woody vegetation of Gondwanan southern Africa. *Gondwana Research* 7, 153-164.

Cowan, R., 1995. *History of Life*. 2nd Edition. Blackwell Scientific Publications, Boston. 462pp.

Johnson, M.R., van Vuuren, C.J., Visser, J.N.J., Cole, D.I., Wickens, H.deV., Christie, A.D.M., Roberts, D.L., Brandl, G., 2006. Sedimentary rocks of the Karoo Supergroup. In: Johnson, M.R., Anhaeusser, C.R. and Thomas, R.J., (Eds). *The Geology of South Africa*. Geological Society of South Africa, Johannesburg / Council for Geoscience, Pretoria. Pp 461 – 499.

Plumstead, E.P., 1969. Three thousand million years of plant life in Africa. *Geological Society of southern Africa, Annexure to Volume LXXII*. 72pp + 25 plates.

8. Chance Find Protocol

Monitoring Programme for Palaeontology - to commence once the excavations / drilling / mining activities begin.

1. The following procedure is only required if fossils are seen on the surface and when drilling/excavations/mining commence.
2. When excavations begin the rocks and must be given a cursory inspection by the environmental officer or designated person. Any fossiliferous material (trace fossils, fossils of plants, insects, bone or coalified material) should be put aside in a suitably protected place. This way the project activities will not be interrupted.
3. Photographs of similar fossils must be provided to the developer to assist in recognizing the fossil plants, vertebrates, invertebrates or trace fossils in the shales and mudstones (for example see Figure 7). This information will be built into the EMP's training and awareness plan and procedures.
4. Photographs of the putative fossils can be sent to the palaeontologist for a preliminary assessment.
5. If there is any possible fossil material found by the developer/environmental officer/miners then the qualified palaeontologist sub-contracted for this

project, should visit the site to inspect the selected material and check the dumps where feasible.

6. Fossil plants or vertebrates that are considered to be of good quality or scientific interest by the palaeontologist must be removed, catalogued and housed in a suitable institution where they can be made available for further study. Before the fossils are removed from the site a SAHRA permit must be obtained. Annual reports must be submitted to SAHRA as required by the relevant permits.
7. If no good fossil material is recovered then no site inspections by the palaeontologist will be necessary. A final report by the palaeontologist must be sent to SAHRA once the project has been completed and only if there are fossils.
8. If no fossils are found and the excavations have finished then no further monitoring is required.

9. Appendix A – Examples of fossils from the Vryheid Formation.



Figure 7: Photographs of fossil plant impressions from the Vryheid Fm (and bone in situ).

10. Appendix B – Details of specialists

Marion Bamford (PhD) **Short CV for PIAs – Jan 2022**

i) Personal details

Present employment: Professor; Director of the Evolutionary Studies Institute.
Member Management Committee of the NRF/DST Centre of
Excellence Palaeosciences, University of the Witwatersrand,
Johannesburg, South Africa

Telephone : +27 11 717 6690
Fax : +27 11 717 6694
Cell : 082 555 6937
E-mail : marion.bamford@wits.ac.za ;
marionbamford12@gmail.com

ii) Academic qualifications

Tertiary Education: All at the University of the Witwatersrand:

1980-1982: BSc, majors in Botany and Microbiology. Graduated April 1983.

1983: BSc Honours, Botany and Palaeobotany. Graduated April 1984.

1984-1986: MSc in Palaeobotany. Graduated with Distinction, November 1986.

1986-1989: PhD in Palaeobotany. Graduated in June 1990.

iii) Professional qualifications

Wood Anatomy Training (overseas as nothing was available in South Africa):

1994 - Service d'Anatomie des Bois, Musée Royal de l'Afrique Centrale, Tervuren,
Belgium, by Roger Dechamps

1997 - Université Pierre et Marie Curie, Paris, France, by Dr Jean-Claude Koeniguer

1997 - Université Claude Bernard, Lyon, France by Prof Georges Barale, Dr Jean-Pierre
Gros, and Dr Marc Philippe

iv) Membership of professional bodies/associations

Palaeontological Society of Southern Africa

Royal Society of Southern Africa - Fellow: 2006 onwards

Academy of Sciences of South Africa - Member: Oct 2014 onwards

International Association of Wood Anatomists - First enrolled: January 1991

International Organization of Palaeobotany – 1993+

Botanical Society of South Africa

South African Committee on Stratigraphy – Biostratigraphy - 1997 - 2016

SASQUA (South African Society for Quaternary Research) – 1997+

PAGES - 2008 –onwards: South African representative

ROCEEH / WAVE – 2008+

INQUA – PALCOMM – 2011+onwards

vii) Supervision of Higher Degrees

All at Wits University

Degree	Graduated/completed	Current
Honours	11	0
Masters	12	4
PhD	11	4
Postdoctoral fellows	12	2

viii) Undergraduate teaching

Geology II – Palaeobotany GEOL2008 – average 65 students per year

Biology III – Palaeobotany APES3029 – average 25 students per year

Honours – Evolution of Terrestrial Ecosystems; African Plio-Pleistocene Palaeoecology;

Micropalaeontology – average 12 - 20 students per year.

ix) Editing and reviewing

Editor: *Palaeontologia africana*: 2003 to 2013; 2014 – Assistant editor

Guest Editor: *Quaternary International*: 2005 volume

Member of Board of Review: *Review of Palaeobotany and Palynology*: 2010 –

Associate Editor: *Cretaceous Research*: 2018-2020

Associate Editor: *Royal Society Open*: 2021 -

Review of manuscripts for ISI-listed journals: 25 local and international journals

x) Palaeontological Impact Assessments

Selected from recent project only – list not complete:

- Mala Mala 2017 for Henwood
- Modimolle 2017 for Green Vision
- Klipoortjie and Finaalspan 2017 for Delta BEC
- Ledjadja borrow pits 2018 for Digby Wells
- Lungile poultry farm 2018 for CTS
- Olienhout Dam 2018 for JP Celliers
- Isondlo and Kwasobabili 2018 for GCS
- Kanakies Gypsum 2018 for Cabanga
- Nababeep Copper mine 2018
- Glencore-Mbali pipeline 2018 for Digby Wells
- Remhoogte PR 2019 for A&HAS
- Bospoort Agriculture 2019 for Kudzala
- Overlooked Quarry 2019 for Cabanga
- Richards Bay Powerline 2019 for NGT
- Eilandia dam 2019 for ACO
- Eastlands Residential 2019 for HCAC
- Fairview MR 2019 for Cabanga
- Graspan project 2019 for HCAC
- Lieliefontein N&D 2019 for Enviropro
- Skeerpoort Farm Mast 2020 for HCAC
- Vulindlela Eco village 2020 for 1World
- KwaZamakhule Township 2020 for Kudzala
- Sunset Copper 2020 for Digby Wells
- McCarthy-Salene 2020 for Prescali
- VLNR Lodge 2020 for HCAC
- Madadeni mixed use 2020 for Enviropro

- Frankfort-Windfield Eskom Powerline 2020 for 1World
- Beaufort West PV Facility 2021 for ACO Associates
- Copper Sunset MR 2021 for Digby Wells
- Sannaspos PV facility 2021 for CTS Heritage
- Smithfield-Rouxville-Zastron PL 2021 for TheroServe
- Glosam Mine 2021 for AHSA

Xi) Research Output

Publications by M K Bamford up to January 2022 peer-reviewed journals or scholarly books: over 160 articles published; 5 submitted/in press; 10 book chapters.

Scopus h-index = 30; Google Scholar h-index = 36; i10-index = 95

Conferences: numerous presentations at local and international conferences.