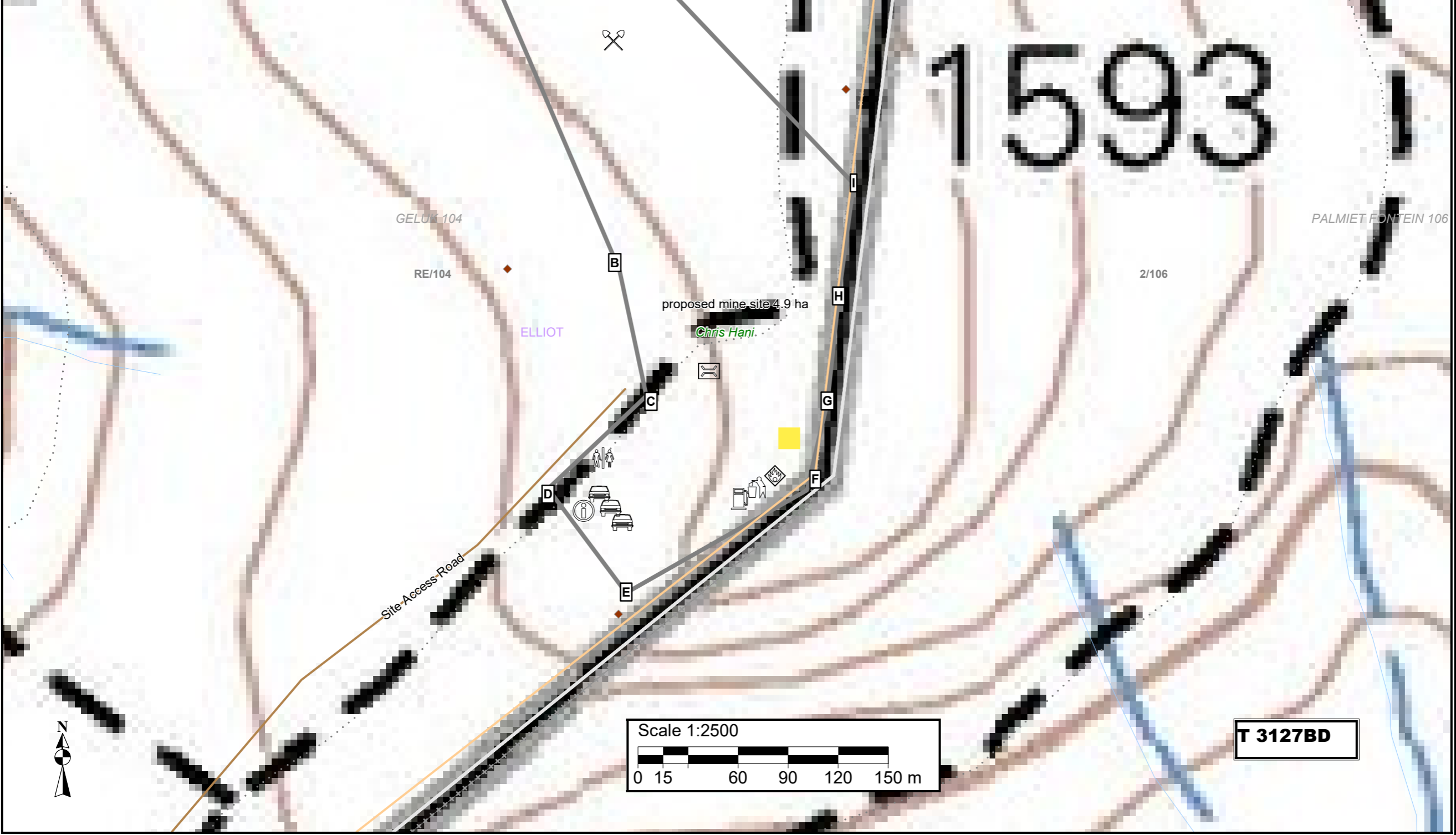
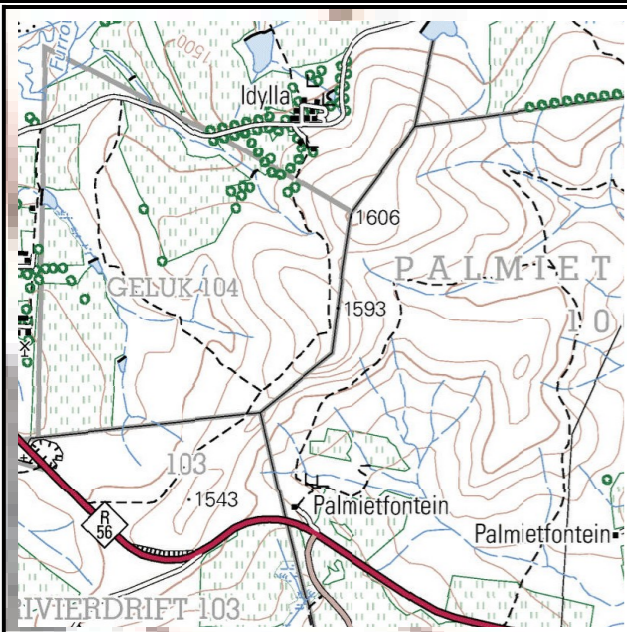


Site Activities Map



- Legend**
- Artificial surfaces
 - EXCAVATION
 - Barriers
 - FENCE
 - Buildings
 - HOUSE
 - River
 - NON-PERENNIAL CENTER LINE
 - Roads
 - ARTERIAL ROUTE - R56
 - OTHER ACCESS
 - TRACK FOOTPATH
 - Mining Application Area
 - Proposed mining Area 4.9ha
 - District Municipality - Chris Hani
 - Administrative region - Elliot
 - Farm portions
 - Parent farms
 - Remaining Extent of the farm Geluk 104 (imported KML) Site Access Road
 - Placemarks
 - Dust Bucket
 - Material Stockpiles
 - Diesel Storage area
 - Mobile Crusher plant
 - Parking area
 - Oil storage area (bunded)
 - Site toilet
 - Waste Storage Area
 - Weighbridge
 - Overburden Stockpile
 - Topsail stockpiles
 - Mobile site office
 - Salvage yard

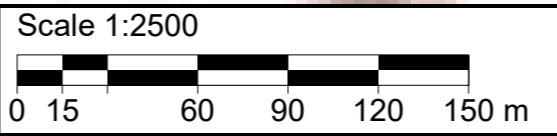
Proposed mining area coordinates:
 A31.332409°S; 27.880222°E
 B31.334384°S; 27.88121°E
 C31.335061°S; 27.881379°E
 D31.335561°S; 27.880763°E
 E31.336121°S; 27.881252°E
 F31.335569°S; 27.882385°E
 G31.335094°S; 27.882516°E
 H31.334529°S; 27.882586°E
 I31.333921°S; 27.882679°E
 J31.332116°S; 27.88068°E
 A31.332409°S; 27.880222°E

A31°19'56.672"S; 27°52'48.799"E
 B31°20'3.782"S; 27°52'52.356"E
 C31°20'6.22"S; 27°52'52.964"E
 D31°20'8.02"S; 27°52'50.747"E
 E31°20'10.036"S; 27°52'52.507"E
 F31°20'8.048"S; 27°52'56.586"E
 G31°20'6.338"S; 27°52'57.058"E
 H31°20'4.304"S; 27°52'57.31"E
 I31°20'2.116"S; 27°52'57.644"E
 J31°19'55.618"S; 27°52'50.448"E
 A31°19'56.672"S; 27°52'48.799"E

Mining permit application area:
 4.9 ha

Client:
 East Cape Farms (Pty) Ltd

Consultant:



T 3127BD