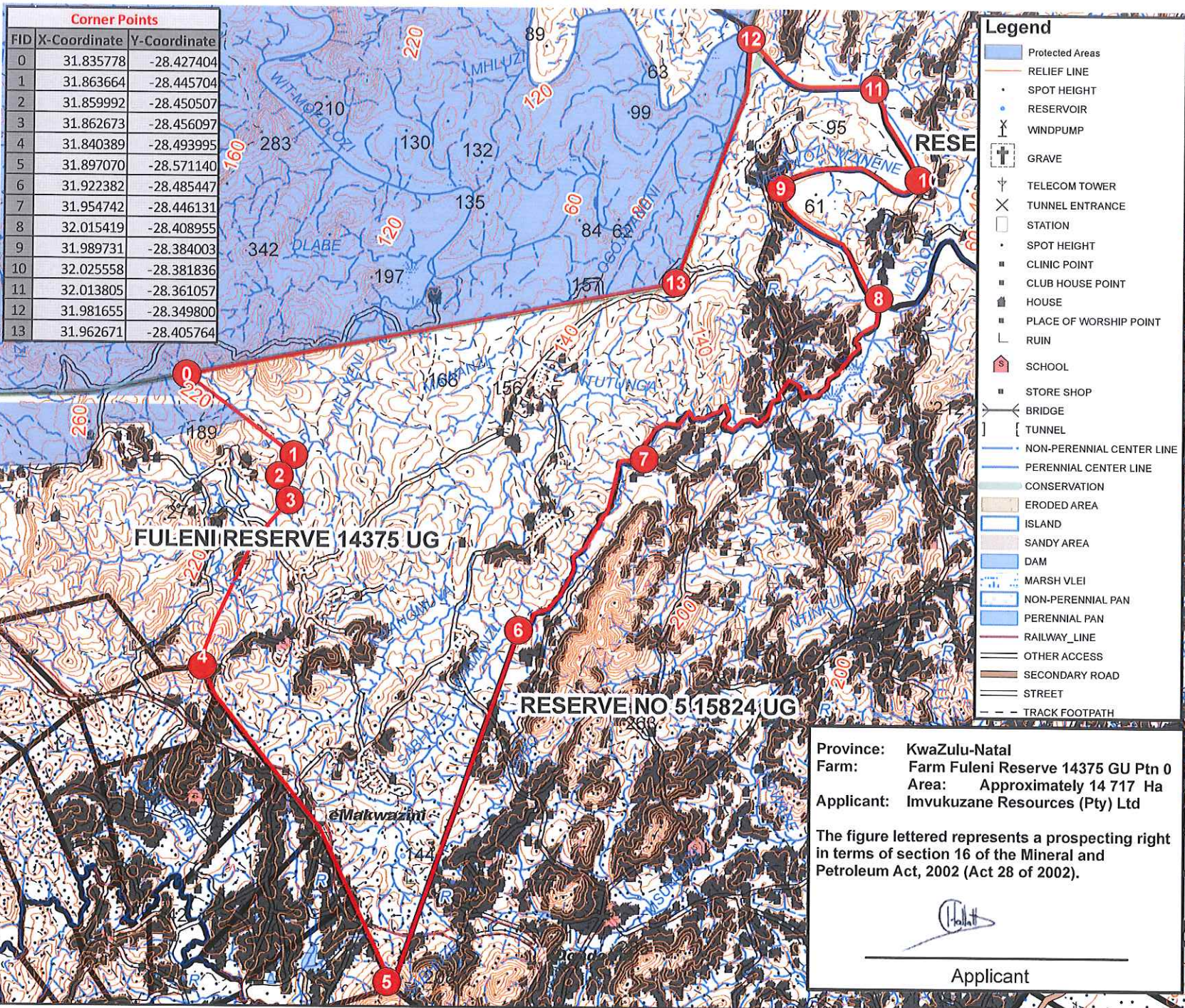
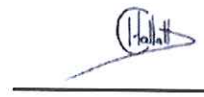


Corner Points		
FID	X-Coordinate	Y-Coordinate
0	31.835778	-28.427404
1	31.863664	-28.445704
2	31.859992	-28.450507
3	31.862673	-28.456097
4	31.840389	-28.493995
5	31.897070	-28.571140
6	31.922382	-28.485447
7	31.954742	-28.446131
8	32.015419	-28.408955
9	31.989731	-28.384003
10	32.025558	-28.381836
11	32.013805	-28.361057
12	31.981655	-28.349800
13	31.962671	-28.405764





Province: KwaZulu-Natal  
 Farm: Farm Fuleni Reserve 14375 GU Ptn 0  
 Area: Approximately 14 717 Ha  
 Applicant: Invukuzane Resources (Pty) Ltd

The figure lettered represents a prospecting right in terms of section 16 of the Mineral and Petroleum Act, 2002 (Act 28 of 2002).

  
 Applicant

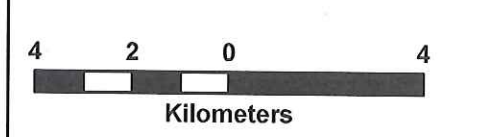
### Legend

-  Proposed Prospecting Area
-  Coordinates



**Invukuzane Resources (Pty) Ltd**

DMR Ref: TBA



Scale 1:155 000

Map title:  
**Regulation 2(2) Plan**

Project name:  
**Fuleni**

Project number:  
**PR0210**

Coordinate System: WGS 1984  
 Date: 2018/04/05 | Author: Dawid Venter