


- Alluvium
- Sandy soils and loam
- Chert
- Greenstone (Bridgetown Type)
- Dolomite
- Phyllites and Greywackes with lenses of quartz schist, limestone & grit.
- Gossan
- Fault
- Bedding
- Vertical joint set

See Annexure D for Full details of Botanical Survey Conducted by Doug Jeffrey

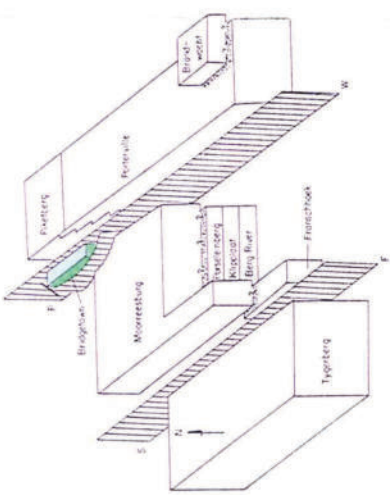
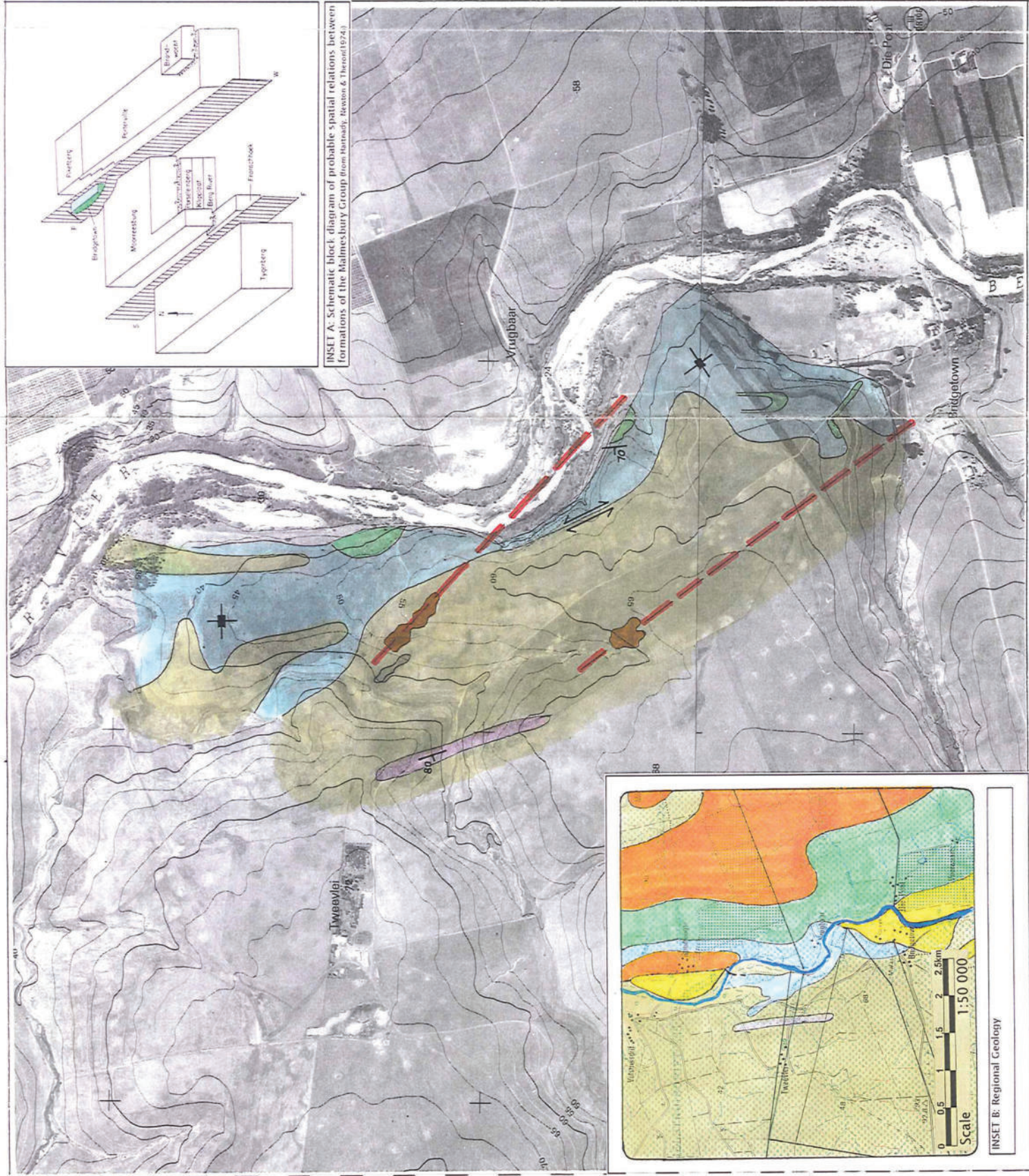
LIME SALES LTD.

BRIDGETOWN DOLOMITE QUARRY - MOORREESBURG
REGIONAL & DETAIL GEOLOGY

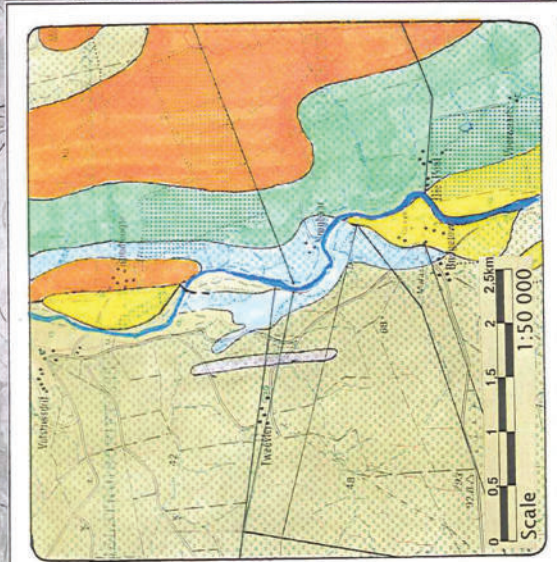
Date: _____ Scale: 1:10 000 Fig No: **3**



NORTH



INSET A: Schematic block diagram of probable spatial relations between formations of the Malmesbury Group from Hartnady, Heaton & Theron (1974.)

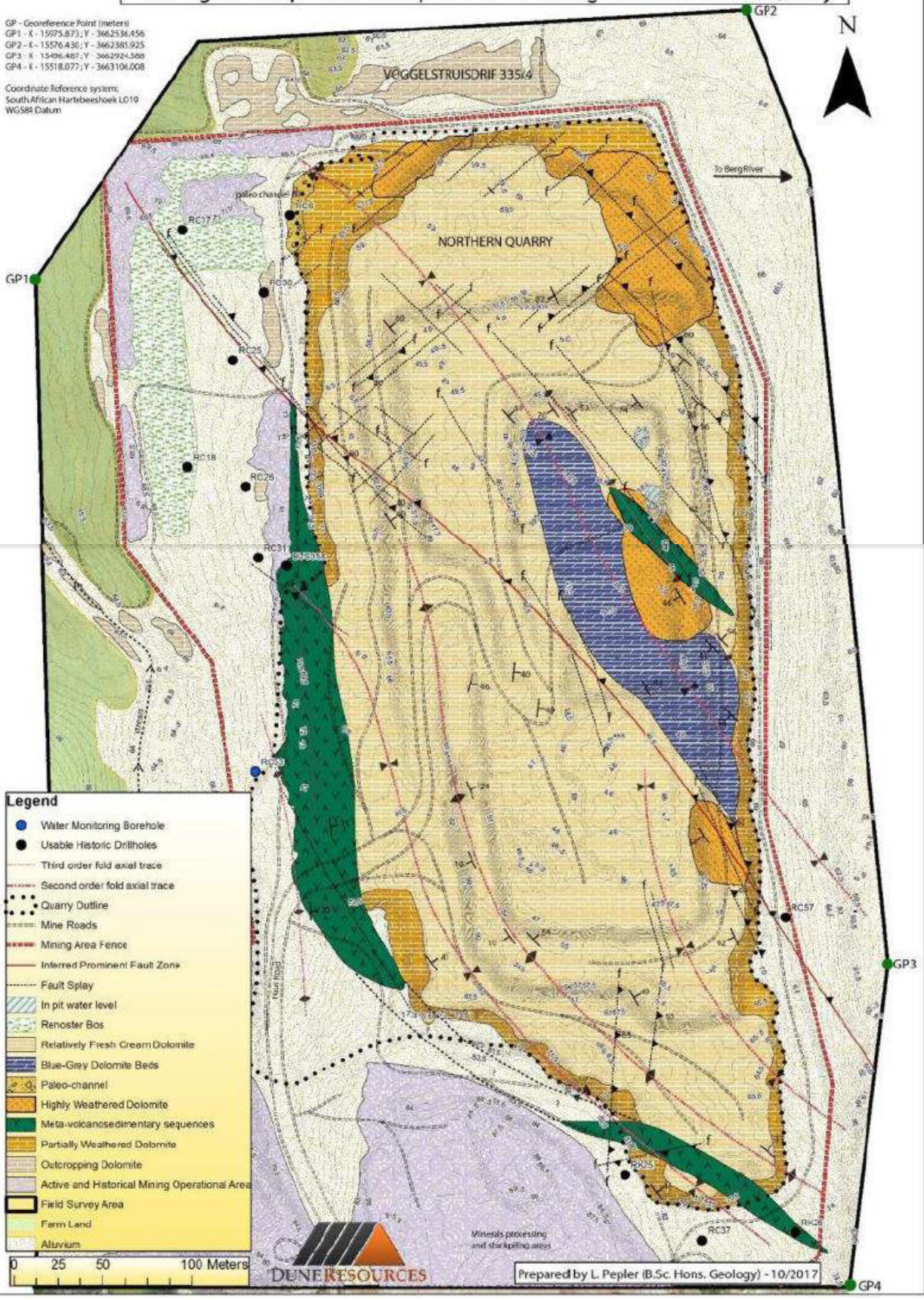


INSET B: Regional Geology

Geological Interpretation map of the SPH Bridgetown Dolomite Quarry

GP - Georeference Point (meters)
 GP1 - X - 15575.873; Y - 3662536.456
 GP2 - X - 15576.430; Y - 3662381.925
 GP3 - X - 15496.487; Y - 3662924.568
 GP4 - X - 15518.077; Y - 3663106.008

Coordinate Reference system:
 South African Hartbeeshoek L019
 WGS84 Datum



- Legend**
- Water Monitoring Borehole
 - Usable Historic Drillholes
 - Third order fold axial trace
 - Second order fold axial trace
 - Quarry Outline
 - Mine Roads
 - Mining Area Fence
 - Inferred Prominent Fault Zone
 - Fault Splay
 - In pit water level
 - Renoster Bos
 - Relatively Fresh Cream Dolomite
 - Blue-Grey Dolomite Beds
 - Paleo-channel
 - Highly Weathered Dolomite
 - Meta-volcanosedimentary sequences
 - Partially Weathered Dolomite
 - Outcropping Dolomite
 - Active and Historical Mining Operational Area
 - Field Survey Area
 - Farm Land
 - Alluvium



Minerals processing and stockpiling areas

Prepared by L. Pepler (B.Sc. Hons. Geology) - 10/2017