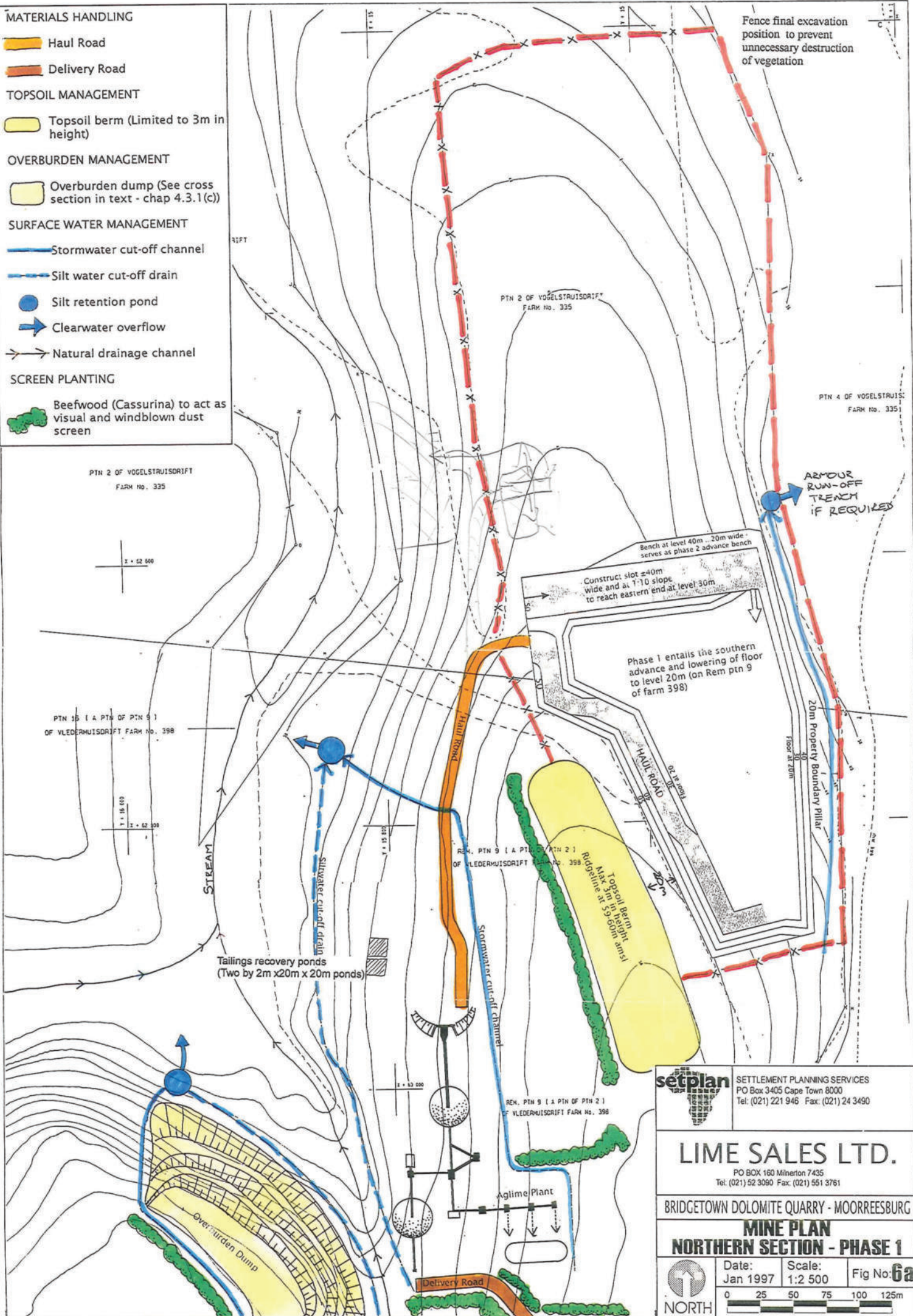


- MATERIALS HANDLING**
- Haul Road
  - Delivery Road
- TOPSOIL MANAGEMENT**
- Topsoil berm (Limited to 3m in height)
- OVERBURDEN MANAGEMENT**
- Overburden dump (See cross section in text - chap 4.3.1(c))
- SURFACE WATER MANAGEMENT**
- Stormwater cut-off channel
  - Silt water cut-off drain
  - Silt retention pond
  - Clearwater overflow
  - Natural drainage channel
- SCREEN PLANTING**
- Beefwood (Cassurina) to act as visual and windblown dust screen



Fence final excavation position to prevent unnecessary destruction of vegetation

PTN 2 OF VOGELSTRAUISDRIFT FARM No. 335

PTN 4 OF VOGELSTRAUISDRIFT FARM No. 335

PTN 2 OF VOGELSTRAUISDRIFT FARM No. 335

1:52 500

PTN 15 (A PTN OF PTN 9) OF VLEDERMUISDRIFT FARM No. 398

1:52 500

REM. PTN 9 (A PTN OF PTN 2) OF VLEDERMUISDRIFT FARM No. 398

REM. PTN 9 (A PTN OF PTN 2) OF VLEDERMUISDRIFT FARM No. 398

Bench at level 40m ...20m wide serves as phase 2 advance bench

Construct slot ±40m wide and at 1:10 slope to reach eastern end at level 30m

Phase 1 entails the southern advance and lowering of floor to level 20m (on Rem ptn 9 of farm 398)

Topsoil Berm  
Max 3m in height  
Bermed at 3:50:00m

Tailings recovery ponds  
(Two by 2m x 20m x 20m ponds)

Aglime Plant

Overburden Dump

Delivery Road

ARMOUR RUN-OFF TRENCH IF REQUIRED

20m Property Boundary Pillar

**setplan** SETTLEMENT PLANNING SERVICES  
PO Box 3405 Cape Town 8000  
Tel: (021) 221 946 Fax: (021) 24 3490

**LIME SALES LTD.**  
PO BOX 160 Milnerton 7435  
Tel: (021) 52 3090 Fax: (021) 551 3761

BRIDGETOWN DOLOMITE QUARRY - MOORREESBURG

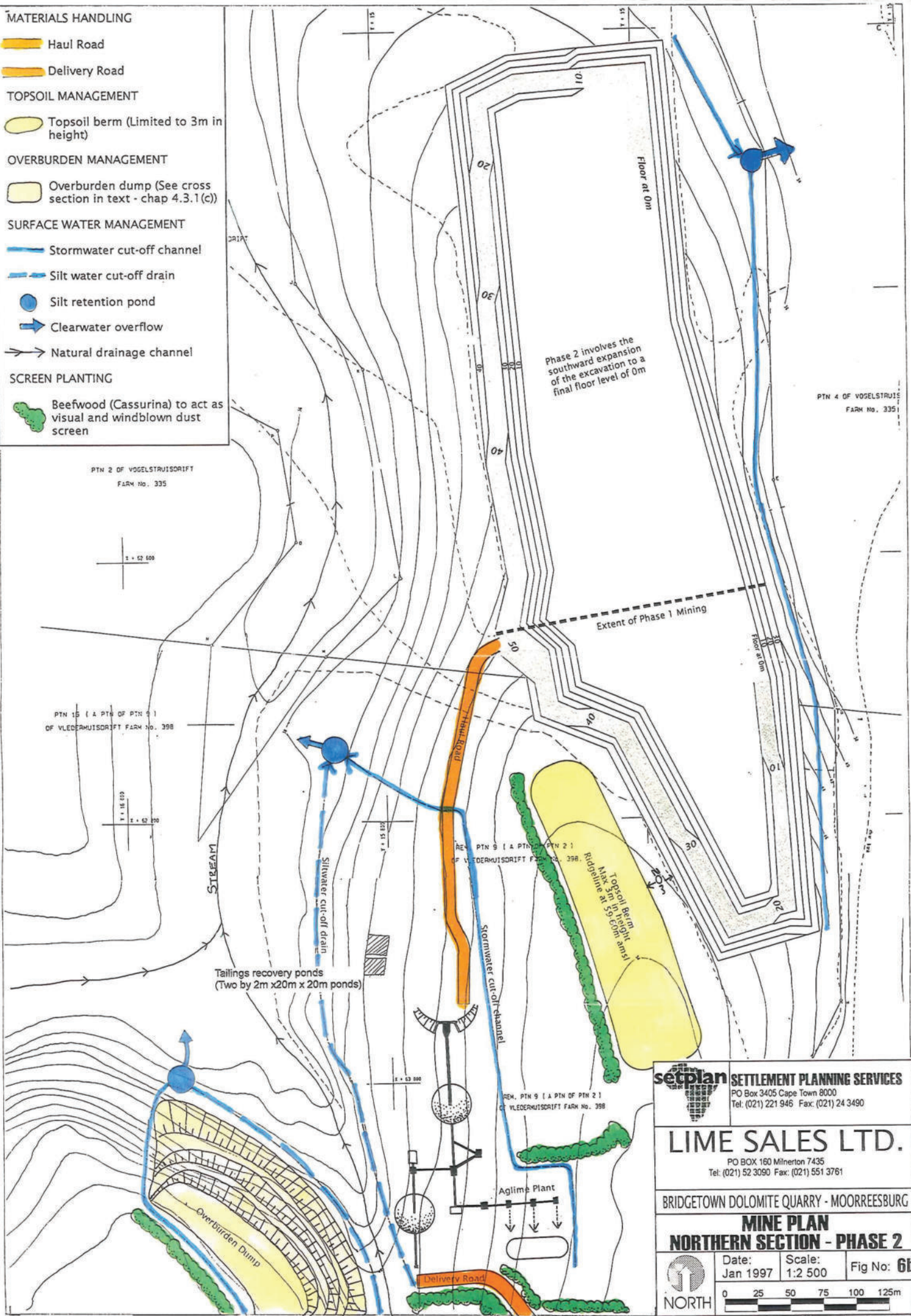
**MINE PLAN  
NORTHERN SECTION - PHASE 1**

Date: Jan 1997 Scale: 1:2 500 Fig No: **6a**

0 25 50 75 100 125m

NORTH

- MATERIALS HANDLING**
- Haul Road
  - Delivery Road
- TOPSOIL MANAGEMENT**
- Topsoil berm (Limited to 3m in height)
- OVERBURDEN MANAGEMENT**
- Overburden dump (See cross section in text - chap 4.3.1(c))
- SURFACE WATER MANAGEMENT**
- Stormwater cut-off channel
  - Silt water cut-off drain
  - Silt retention pond
  - Clearwater overflow
  - Natural drainage channel
- SCREEN PLANTING**
- Beefwood (Cassurina) to act as visual and windblown dust screen



Phase 2 involves the southward expansion of the excavation to a final floor level of 0m

PTN 4 OF VOGELSTRUISDRIFT FARM NO. 335

PTN 2 OF VOGELSTRUISDRIFT FARM NO. 335



PTN 15 (& PTN OF PTN 9) OF VLEDERHUISDRIFT FARM NO. 398



Tailings recovery ponds (Two by 2m x 20m x 20m ponds)

PTN 9 (& PTN OF PTN 2) OF VLEDERHUISDRIFT FARM NO. 398

Topsoil Berm  
Ridge line at 55.60m amsl

Aglime Plant

**setplan** SETTLEMENT PLANNING SERVICES  
 PO Box 3405 Cape Town 8000  
 Tel: (021) 221 946 Fax: (021) 24 3490

**LIME SALES LTD.**  
 PO BOX 160 Milnerton 7435  
 Tel: (021) 52 3090 Fax: (021) 551 3761

BRIDGETOWN DOLOMITE QUARRY - MOORREESBURG


**MINE PLAN  
 NORTHERN SECTION - PHASE 2**

NORTH	Date:	Scale:	Fig No:
	Jan 1997	1:2 500	6b


**MATERIALS HANDLING**

-  Haul Road
-  Delivery Road






**TOPSOIL MANAGEMENT**

-  Topsoil berm (Limited to 3m in height)


**OVERBURDEN MANAGEMENT**

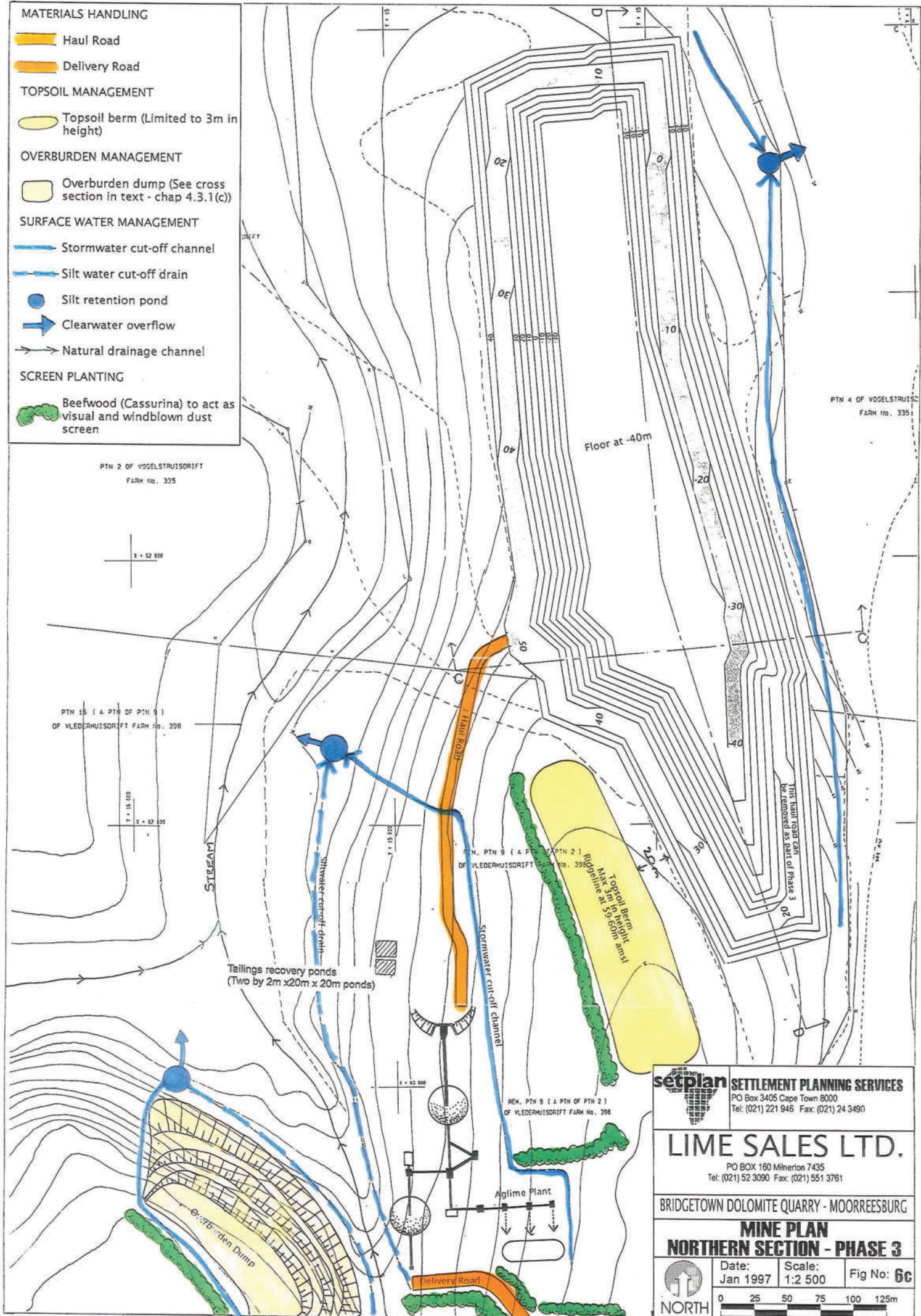
-  Overburden dump (See cross section in text - chap 4.3.1(c))

**SURFACE WATER MANAGEMENT**

-  Stormwater cut-off channel
-  Silt water cut-off drain
-  Silt retention pond
-  Clearwater overflow
-  Natural drainage channel

**SCREEN PLANTING**

-  Beefwood (Cassurina) to act as visual and windblown dust screen


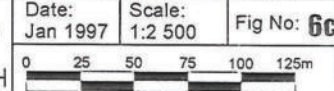


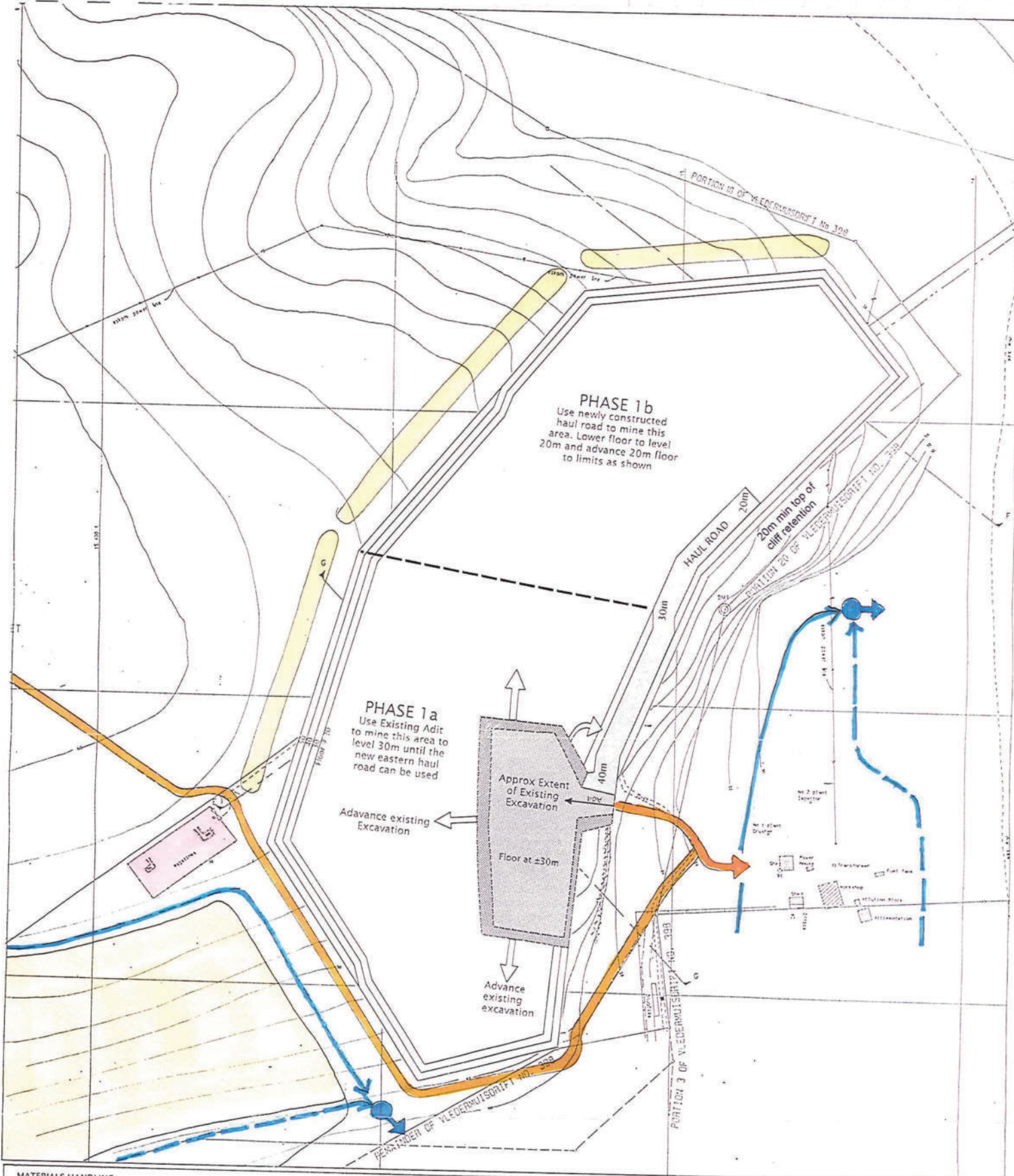
**setplan** SETTLEMENT PLANNING SERVICES  
 PO Box 3405 Cape Town 8000  
 Tel: (021) 221 946 Fax: (021) 24 3490

**LIME SALES LTD.**  
 PO BOX 180 Milneron 7435  
 Tel: (021) 52 3090 Fax: (021) 551 3761

BRIDGETOWN DOLOMITE QUARRY - MOORREESBURG

**MINE PLAN  
 NORTHERN SECTION - PHASE 3**

Date: Jan 1997 Scale: 1:2 500 Fig No: 6c  
 NORTH  




- MATERIALS HANDLING**
- Through existing adit to existing dolomite aglime plant
  - Later in phase to the new plant at the northern section
- TOPSOIL MANAGEMENT**
- Topsoil berms to be limited to 3m in height
- OVERBURDEN MANAGEMENT**
- Overburden to be stockpiled as described in chap 4.3.1(e)
- SURFACE WATER MANAGEMENT**
- Stormwater cut-off channels
  - Silt-water cut off drains
  - Silt Retention Ponds
  - Clear water run-off
- MAGAZINE**
- Magazine may require relocation

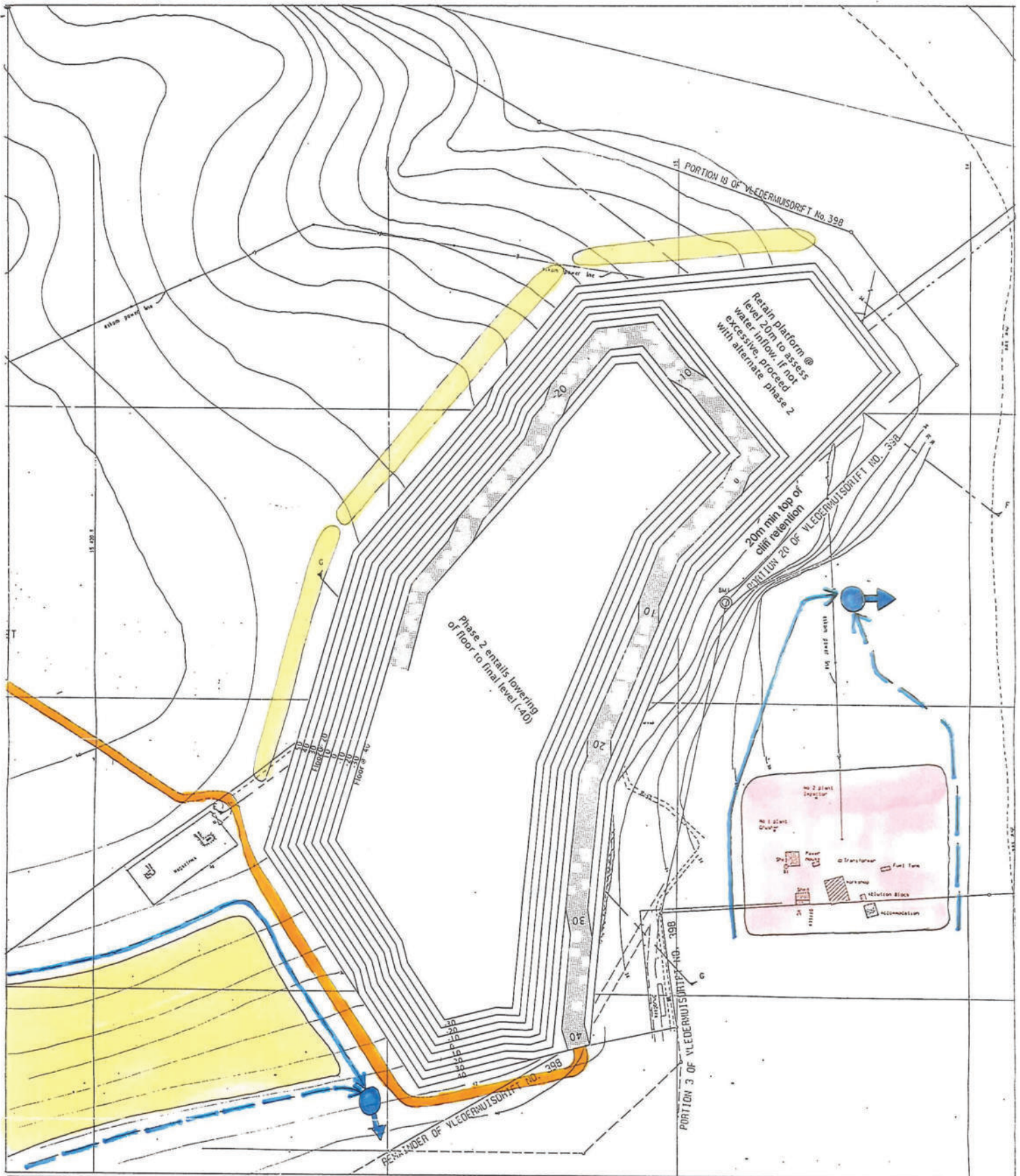
**setplan** SETTLEMENT PLANNING SERVICES  
 PO Box 3405 Cape Town 8000  
 Tel (021) 221 946 Fax (021) 24 3450

**LIME SALES LTD.**  
 PO BOX 180 Murrumbidgee 7435  
 Tel (021) 52 3090 Fax (021) 551 3751



BRIDGETOWN DOLOMITE QUARRY - MOORREESBURG

**MINE PLAN  
 SOUTHERN SECTION - PHASE 1**


	Date: Jan 1997	Scale: 1:2 500	Fig No: 6d



**MATERIALS HANDLING**

-  All material through new internal haul road and eastern external haul road to plant at Northern Mining Section
-  Existing plant, offices, workshops to be demolished, the ahrdrened areas to be ripped and grassed





**TOPSOIL MANAGEMENT**

-  Topsoil berms to be limited to 3m in height

**OVERBURDEN MANAGEMENT**

-  Overburden to be stockpiled as described in chap 4.3.1(c)

**SURFACE WATER MANAGEMENT**

-  Stormwater cut-off channels
-  Silt-water cut off drains
-  Silt Retention Ponds
-  Clear water run-off



**SETTLEMENT PLANNING SERVICES**  
 PO Box 3405 Cape Town 8000  
 Tel: (021) 221 946 Fax: (021) 24 3490

**LIME SALES LTD.**

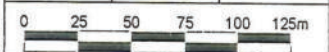
PO BOX 160 Milnerton 7435  
 Tel: (021) 52 3090 Fax: (021) 551 3761

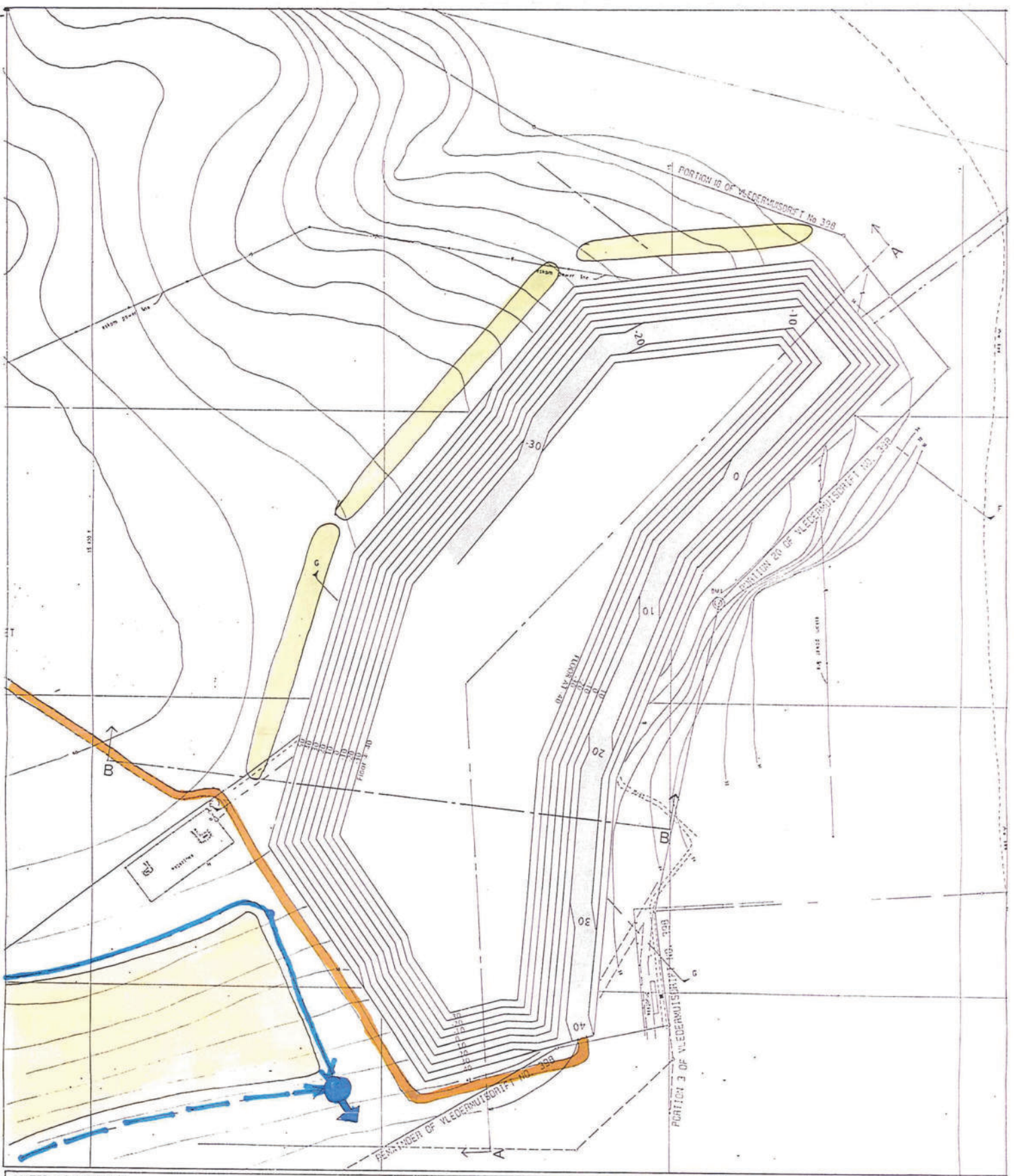
BRIDGETOWN DOLOMITE QUARRY - MOORREESBURG

**MINE PLAN  
 SOUTHERN SECTION - PHASE 2**




Date: Jan 1997 Scale: 1:2 500 Fig No: 6e






**MATERIALS HANDLING**

 All material through new internal haul road and eastern external haul road to plant at Northern Mining Section


**TOPSOIL MANAGEMENT**


 Topsoil berms to be limited to 3m in height

**OVERBURDEN MANAGEMENT**

 Overburden to be stockpiled as described in chap 4.3.1(c)

**SURFACE WATER MANAGEMENT**

 Stormwater cut-off channels

 Silt-water cut off drains

Silt Retention Ponds

Clear water run-off


**setplan** SETTLEMENT PLANNING SERVICES  
 PO Box 3405 Cape Town 8006  
 Tel (021) 221 945 Fax (021) 24 3490


**LIME SALES LTD.**  
 PO BOX 160 Minerton 7435  
 Tel (021) 52 3090 Fax (021) 551 3761

BRIDGETOWN DOLOMITE QUARRY · MOORREESBURG

**MINE PLAN  
 SOUTHERN SECTION - PHASE 2 (alt)**

Date: Jan 1997 Scale: 1:2 500 Fig No: **6f**

 NORTH



**SOUTHERN SECTION**

- Existing Excavation
- Phase 1a
- Phase 1b
- Phase 2
- Phase 2 (Alternate)
- Haul Road

**NORTHERN SECTION**

- Phase 1
- Phase 2
- Phase 3
- Haul Road

For cross section positions see fig 6c & 6f



SETTLEMENT PLANNING SERVICES  
PO Box 3405 Cape Town 800  
Tel: (021) 221 946 Fax: (021) 24 1430

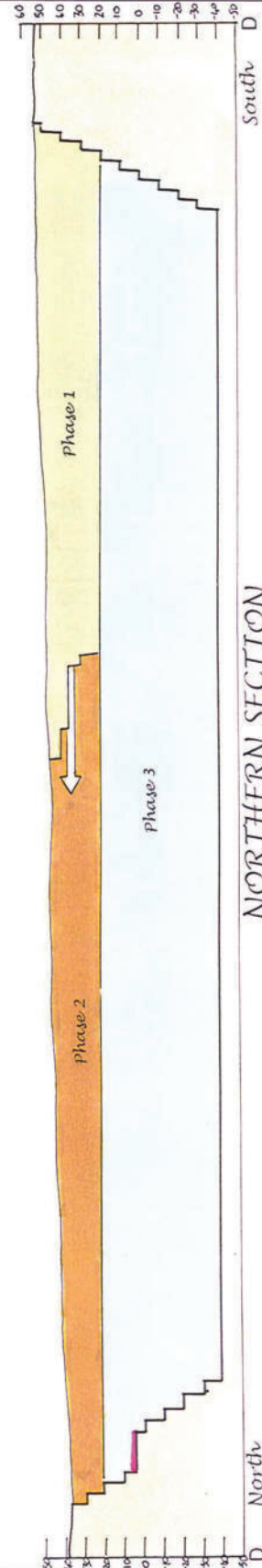
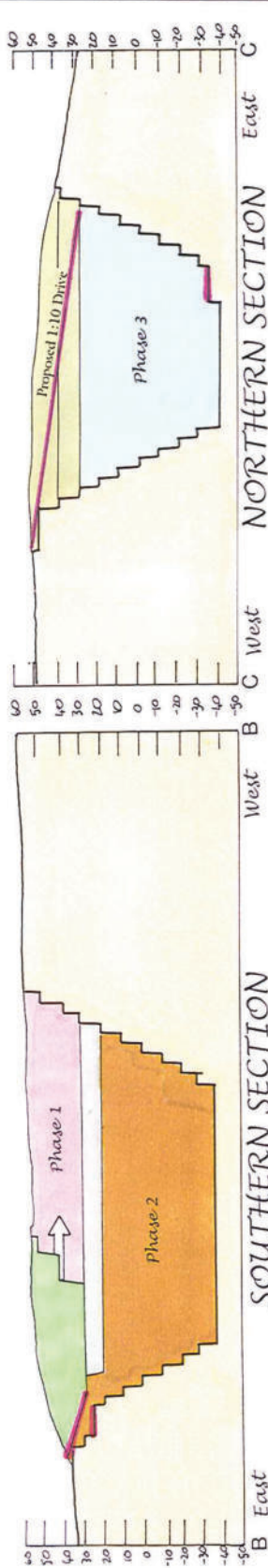
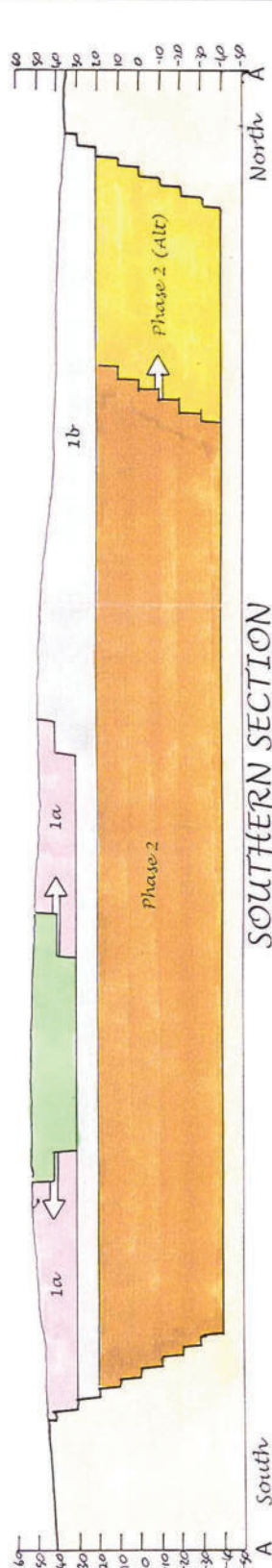
**LIME SALES LTD.**

PO BOX 160 Mblerton 7435  
Tel: (021) 52 3050 Fax: (021) 551 3761

BRIDGETOWN DOLOMITE QUARRY - MOORREESBURG

**CROSS SECTIONS**

Date: Jan 1997  
Scale: 1:2 500  
Fig No: 6g



**NORTHERN SECTION**




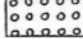
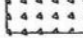
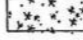



South

North

# LAYOUT PLAN

## Bridgtown Project

### LEGEND

-  Proposed new overburden and dolomite fines dumps
-  Power lines
-  Present Northern Quarry
-  Future quarry boundaries
-  Plant Sites
-  Old Agg. Lime quarry being re-filled with overburden
-  Property Boundaries
-  Mining Zone Application Approved 1992
-  Mining Zone Application Approved 1997

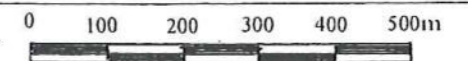
Land	Owner	Area
335/2	AM Burger	27,9 ha
335/2 (Rem)	AM Burger	17,6 ha
398/9	JA Smit	45,1 ha
398/8	JA Smit	65,8 ha
335/4	Dept. Water Affairs	
398/16	Dept. Water Affairs	

### LIME SALES LTD.

PO Box 160, Milnerton, 7435  
 Tel: (021) 5523090  
 Fax: (021) 5513761

### BRIDGETOWN DOLOMITE MINE

Scale:  
1:10 000



Drawing No.	01/2005
Drawn	D.W. Rees
Date	9 <sup>th</sup> June 2009
Revision	

Fig No: 4

