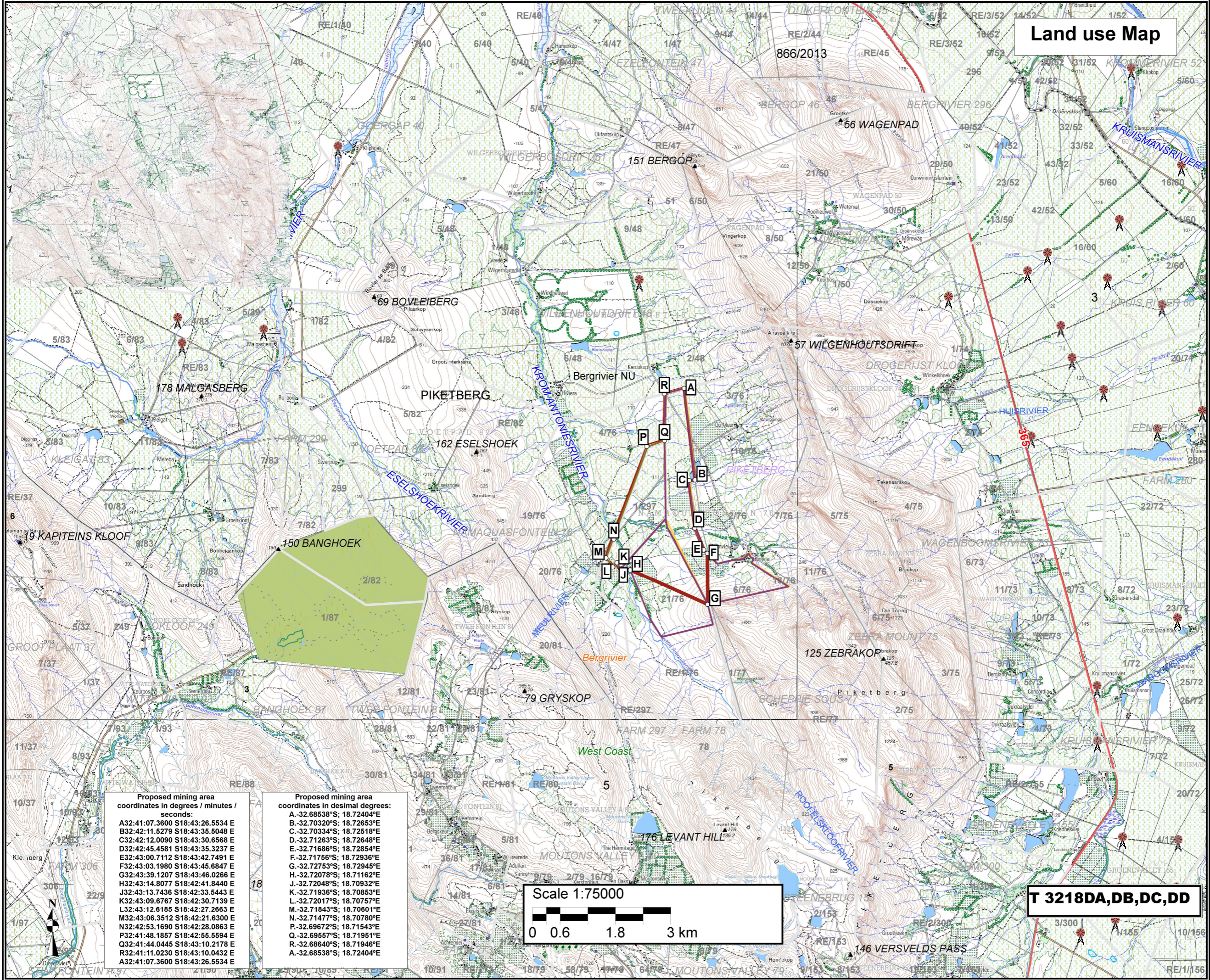


Land use Map

- Legend**
- Boundaries
 - CONSERVATION
 - Inland water
 - DAM
 - MARSH VLEI
 - Railway
 - STANDARD
 - River
 - NON-PERENNIAL CENTER LINE
 - PERENNIAL CENTER LINE
 - Roads
 - MAIN ROAD
 - N7
 - TRACK FOOTPATH
 - Vegetation
 - CULTIVATED LAND
 - ORCHARD VINEYARD
 - TREE
 - WOODLAND
 - Water source
 - FOUNTAIN
 - WINDPUMP
 - Farm portions
 - Parks
 - Western Cape Province
 - District Municipalities - West Coast
 - Local Municipalities - Bergrivier
 - Ward - No 5
 - Mining Right Area
 - Administrative regions - Piketberg
 - Farm portions
 - Magisterial districts- Piketberg
 - Parent farms
 - Portion 6 (Remaining Extent) of the farm Namaquasfontein 76 RD
 - Portion 1 of the Farm 297 RD
 - Portion 21 of the farm Namaquasfontein 76 RD

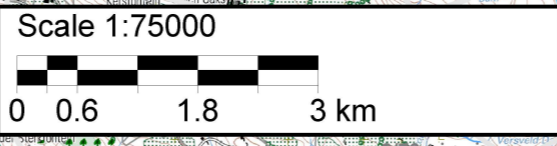


Proposed mining area coordinates in degrees / minutes / seconds:

A	32:41:07.3600	S	18:43:26.5534	E
B	32:42:11.5279	S	18:43:35.5048	E
C	32:42:12.0090	S	18:43:30.6568	E
D	32:42:45.4581	S	18:43:35.3237	E
E	32:43:00.7112	S	18:43:42.7491	E
F	32:43:03.1980	S	18:43:45.6847	E
G	32:43:39.1207	S	18:43:46.0266	E
H	32:43:14.8077	S	18:42:41.8440	E
J	32:43:13.7436	S	18:42:33.5443	E
K	32:43:09.6767	S	18:42:30.7139	E
L	32:43:12.6185	S	18:42:27.2663	E
M	32:43:06.3512	S	18:42:21.6300	E
N	32:42:53.1690	S	18:42:28.0863	E
P	32:41:48.1857	S	18:42:55.5594	E
Q	32:41:44.0445	S	18:43:10.2178	E
R	32:41:11.0230	S	18:43:10.0432	E
A	32:41:07.3600	S	18:43:26.5534	E

Proposed mining area coordinates in decimal degrees:

A	-32.68538°S	18.72404°E
B	-32.70320°S	18.72653°E
C	-32.70334°S	18.72518°E
D	-32.71263°S	18.72648°E
E	-32.71686°S	18.72854°E
F	-32.71756°S	18.72936°E
G	-32.72753°S	18.72945°E
H	-32.72078°S	18.71162°E
J	-32.72048°S	18.70932°E
K	-32.71936°S	18.70853°E
L	-32.72017°S	18.70757°E
M	-32.71843°S	18.70601°E
N	-32.71477°S	18.70780°E
P	-32.69672°S	18.71543°E
Q	-32.69557°S	18.71951°E
R	-32.68640°S	18.71946°E
A	-32.68538°S	18.72404°E



T 3218DA, DB, DC, DD

Client:



Consultant:

