

Site Alternatives Map

- Legend**
- Administrative region - Namakwaland
 - Farm portions
 - Magisterial district - Namakwaland
 - A Parent farms
 - Local Municipality - Khâi-Ma
 - District Municipality - Namakwa
 - Northern Cape Province
 - o Towns
 - Ward no 4
 - Aroams Mining application area
 - Site Alternative

Proposed mining area coordinates:
 A29.169596°S; 18.989575°E
 B29.168753°S; 18.99447°E
 C29.169143°S; 18.994344°E
 D29.169019°S; 18.993912°E
 E29.169558°S; 18.992842°E
 F29.169719°S; 18.991505°E
 G29.171832°S; 18.992989°E
 H29.17114°S; 18.995964°E
 J29.171028°S; 18.996255°E
 K29.171409°S; 18.996338°E
 L29.174968°S; 18.998313°E
 M29.175302°S; 18.99771°E
 N29.171762°S; 18.995388°E
 P29.172402°S; 18.992822°E
 Q29.17215°S; 18.992078°E
 R29.171908°S; 18.990222°E
 A29.169596°S; 18.989575°E

A29°10'10.546"S; 18°59'22.47"E
 B29°10'7.511"S; 18°59'40.092"E
 C29°10'8.915"S; 18°59'39.638"E
 D29°10'8.468"S; 18°59'38.083"E
 E29°10'10.409"S; 18°59'34.231"E
 F29°10'10.988"S; 18°59'29.418"E
 G29°10'18.595"S; 18°59'34.76"E
 H29°10'16.104"S; 18°59'45.47"E
 J29°10'15.701"S; 18°59'46.518"E
 K29°10'17.072"S; 18°59'46.817"E
 L29°10'29.885"S; 18°59'53.927"E
 M29°10'31.087"S; 18°59'51.756"E
 N29°10'18.343"S; 18°59'43.397"E
 P29°10'20.647"S; 18°59'34.159"E
 Q29°10'19.74"S; 18°59'31.481"E
 R29°10'18.869"S; 18°59'24.799"E
 A29°10'10.546"S; 18°59'22.47"E

Mining right application area:
 13.54 ha

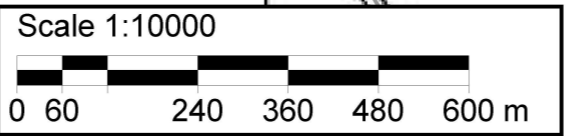
Proposed site alternative area coordinates:
 a29.171028°S; 18.984064°E
 b29.172552°S; 18.984803°E
 c29.176032°S; 18.986838°E
 d29.175363°S; 18.98912°E
 e29.174639°S; 18.991383°E
 f29.172471°S; 18.990422°E
 g29.169639°S; 18.989591°E
 a29.171028°S; 18.984064°E

a29°10'15.701"S; 18°59'2.63"E
 b29°10'21.187"S; 18°59'5.291"E
 c29°10'33.715"S; 18°59'12.617"E
 d29°10'31.307"S; 18°59'20.832"E
 e29°10'28.7"S; 18°59'28.979"E
 f29°10'20.896"S; 18°59'25.519"E
 g29°10'10.7"S; 18°59'22.528"E
 a29°10'15.701"S; 18°59'2.63"E

Site Alternative area:
 30.55 ha

Client:
 Aroams Quarry
 (Pty) Ltd

Consultant:



T 2918BB / 2919AA

