

Site Activities Map

- Legend**
- Administrative region - Namakwaland
 - Farm portions
 - Magisterial district - Namakwaland
 - Parent farms
 - Local Municipality - Khâi-Ma
 - District Municipality - Namakwa
 - Northern Cape Province
 - Towns
 - Ward no 4
 - Aroams Mining application area
 - Processing Area and Stockpiling Area
 - Mining Area
 - Access Road

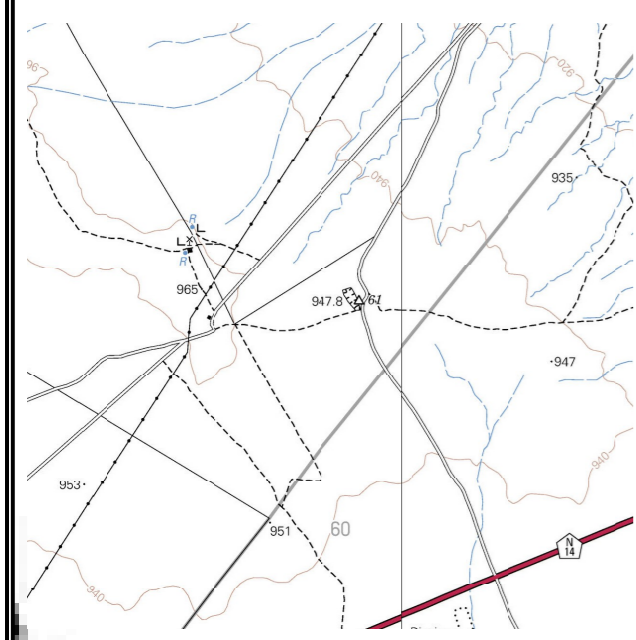
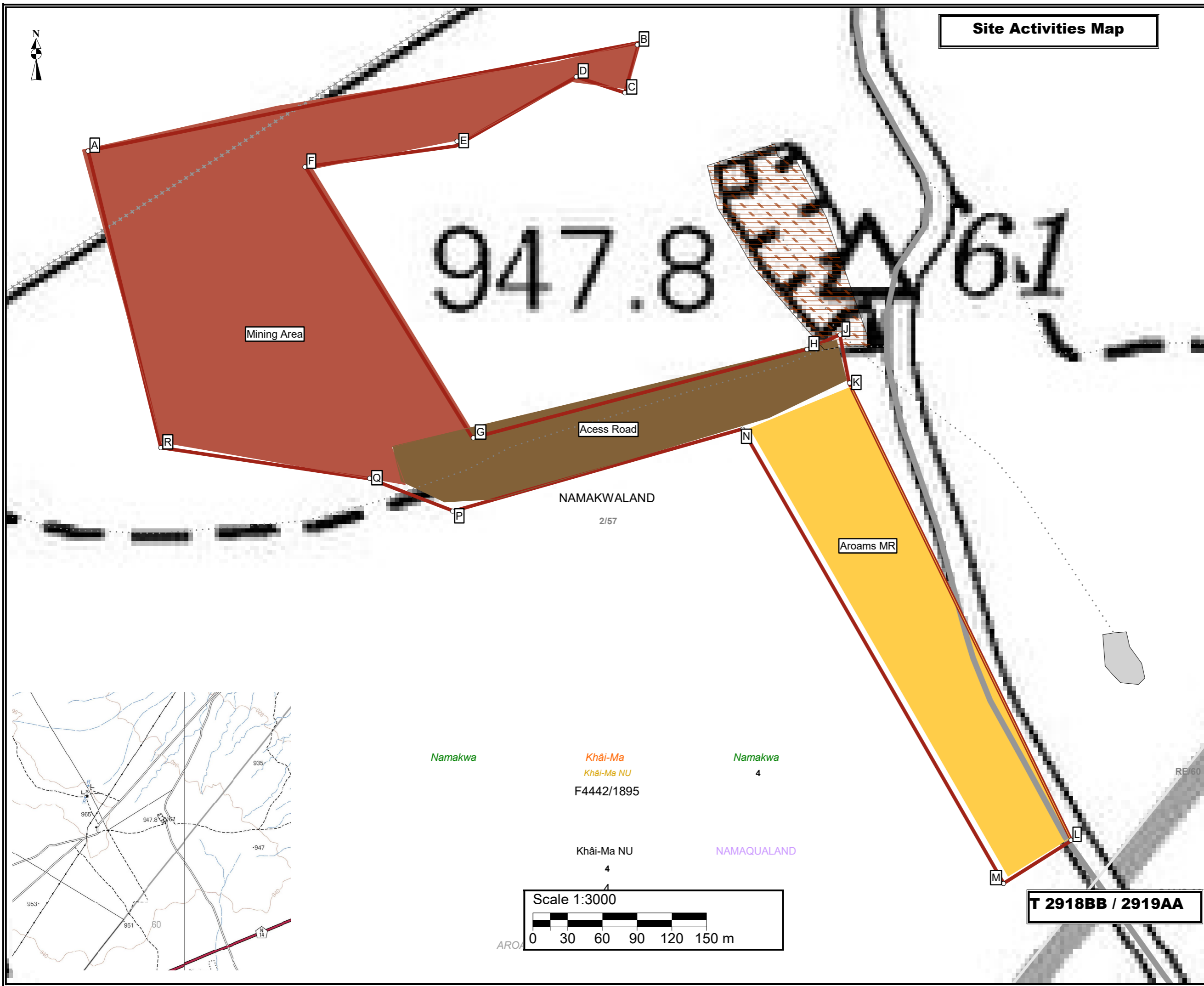
Proposed mining area coordinates:
 A29.169596°S; 18.989575°E
 B29.168753°S; 18.99447°E
 C29.169143°S; 18.994344°E
 D29.169019°S; 18.993912°E
 E29.169558°S; 18.992842°E
 F29.169719°S; 18.991505°E
 G29.171832°S; 18.992989°E
 H29.17114°S; 18.995964°E
 J29.171028°S; 18.996255°E
 K29.171409°S; 18.996338°E
 L29.174968°S; 18.998313°E
 M29.175302°S; 18.99771°E
 N29.171762°S; 18.995388°E
 P29.172402°S; 18.992822°E
 Q29.17215°S; 18.992078°E
 R29.171908°S; 18.990222°E
 A29.169596°S; 18.989575°E

A29°10'10.546"S; 18°59'22.47"E
 B29°10'7.511"S; 18°59'40.092"E
 C29°10'8.915"S; 18°59'39.638"E
 D29°10'8.468"S; 18°59'38.083"E
 E29°10'10.409"S; 18°59'34.231"E
 F29°10'10.988"S; 18°59'29.418"E
 G29°10'18.595"S; 18°59'34.76"E
 H29°10'16.104"S; 18°59'45.47"E
 J29°10'15.701"S; 18°59'46.518"E
 K29°10'17.072"S; 18°59'46.817"E
 L29°10'29.885"S; 18°59'53.927"E
 M29°10'31.087"S; 18°59'51.756"E
 N29°10'18.343"S; 18°59'43.397"E
 P29°10'20.647"S; 18°59'34.159"E
 Q29°10'19.74"S; 18°59'31.481"E
 R29°10'18.869"S; 18°59'24.799"E
 A29°10'10.546"S; 18°59'22.47"E

Mining right application area:
 13.54 ha

Client:
 Aroams Quarry (Pty) Ltd

Consultant:



Namakwa
 Khâi-Ma
 Khâi-Ma NU
 F4442/1895
 Khâi-Ma NU
 4
 NAMAQUALAND



T 2918BB / 2919AA