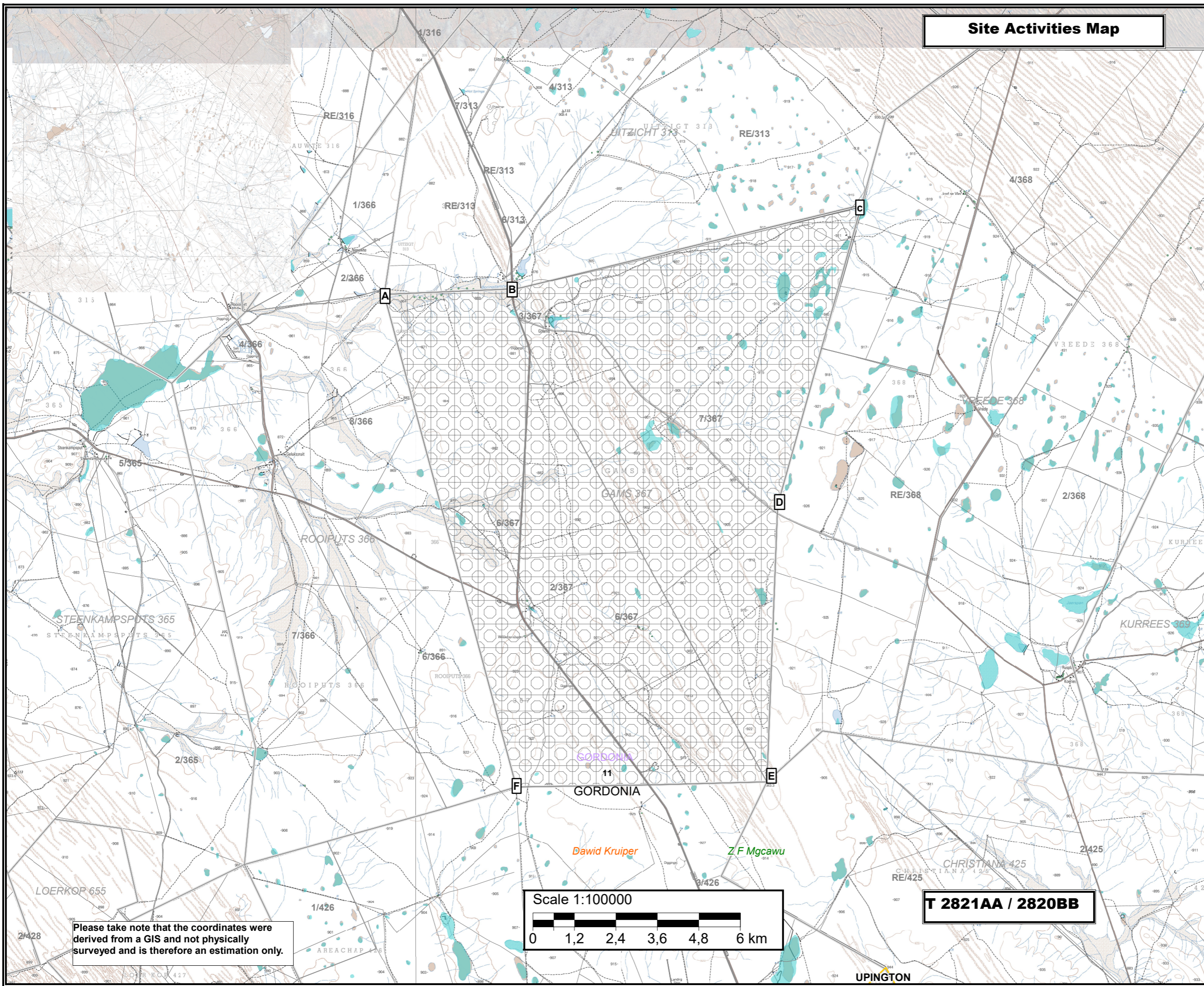


Site Activities Map



- Legend**
- A Parent farms
 - Farm portions
 - Administrative region: Gordonia
 - Magisterial: Gordonia
 - Z F Mgcawu District Municipalities
 - Dawid Kruijer Local Municipality
 - Wards 17
- The proposed activity will make use of non-invasive as well as invasive prospecting activities that will include borehole drilling to retrieve geological core samples. Drilling: Reverse Circulation drilling is the most cost-effective method for the testing and assessing the deposit with Percussion techniques being offered as an alternative should circumstances so require. Initially 10 such boreholes are proposed. Up to 20 diamond drill holes are suggested to recover core in support laboratory analysis. Laboratory assay will proceed concurrently with drilling. All drilling shall be undertaken to a maximum depth of 500 meters.
- Northern Cape Provinces
 - Roads
 - Vegetation
 - Inland water
 - Drainage

- A - 28.064612°S 20.991008°E
- B - 28.062907°S 21.028319°E
- C - 28.041620°S 21.130234°E
- D - 28.118121°S 21.106681°E
- E - 28.190596°S 21.103276°E
- F - 28.191853°S 21.029594°E

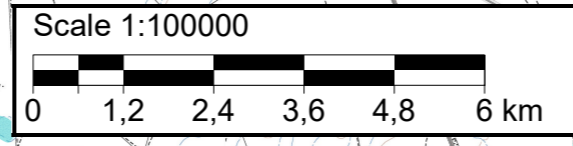
- A 28°3'52,6032"S; 20°59'27,6288"E
- B 28°3'46,4652"S; 21°1'41,9484"E
- C 28°2'29,832"S; 21°7'48,8424"E
- D 28°7'5,2356"S; 21°6'24,0516"E
- E 28°11'26,1456"S; 21°6'11,7936"E
- F 28°11'30,6708"S; 21°1'46,5384"E

Proposed prospecting area:
15 065.81 ha

Client:
African Exploration
Mining and Finance
Corporation SOC Ltd

Consultant:

Please take note that the coordinates were derived from a GIS and not physically surveyed and is therefore an estimation only.



T 2821AA / 2820BB

UPINGTON